

\$329,900 - 31 Steele Crescent, Edmonton

MLS® #E4463343

\$329,900

4 Bedroom, 2.00 Bathroom, 989 sqft

Single Family on 0.00 Acres

York, Edmonton, AB

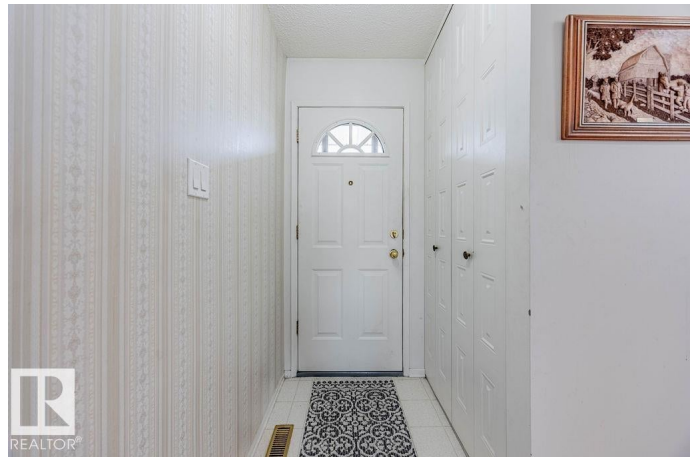
Move in ready bungalow offering comfortable living, updates, and an great location close to schools, shopping, parks, and all amenities. This well-maintained home features three bedrooms on the main level plus an additional bedroom in the fully finished basement, providing plenty of room for family or guests. There are two full bathrooms, both updated with modern fixtures in 2018. The bright and inviting front living room includes a large upgraded window (2018) that fills the space with natural light. Main floor dining room & 4pce bath. Durable lino flooring and plumbing fixtures were also updated in 2018, while the furnace was replaced in 2014 for added efficiency and peace of mind. The fully finished basement offers a generous family or recreation area, perfect for entertaining or relaxing. Outside, you'll find an oversized 23'x23' insulated double garage with convenient rear alley access, a concrete patio that overlooks the fenced backyard, and low-maintenance landscaping that enhances the curb appeal.

Built in 1971

Essential Information

MLS® # E4463343

Price \$329,900



Bedrooms	4
Bathrooms	2.00
Full Baths	2
Square Footage	989
Acres	0.00
Year Built	1971
Type	Single Family
Sub-Type	Detached Single Family
Style	Bungalow
Status	Active

Community Information

Address	31 Steele Crescent
Area	Edmonton
Subdivision	York
City	Edmonton
County	ALBERTA
Province	AB
Postal Code	T5A 1G4

Amenities

Amenities	See Remarks
Parking	Double Garage Detached, Insulated, Over Sized, Rear Drive Access

Interior

Appliances	Dishwasher-Built-In, Dryer, Garage Control, Garage Opener, Refrigerator, Storage Shed, Stove-Electric, Vacuum Systems, Washer, Window Coverings
Heating	Forced Air-1, Natural Gas
Stories	2
Has Basement	Yes
Basement	Full, Finished

Exterior

Exterior	Wood, Vinyl
Exterior Features	Back Lane, Fenced, Landscaped, Schools
Roof	Asphalt Shingles
Construction	Wood, Vinyl
Foundation	Concrete Perimeter

Additional Information

Date Listed October 24th, 2025

Days on Market 8

Zoning Zone 02

DATA IS DEEMED RELIABLE BUT IS NOT GUARANTEED ACCURATE BY THE REALTORS® ASSOCIATION OF EDMONTON. COPYRIGHT 2025 BY THE REALTORS® ASSOCIATION OF EDMONTON. ALL RIGHTS RESERVED. Trademarks are owned or controlled by the Canadian Real Estate Association (CREA) and identify real estate professionals who are members of CREA (REALTOR®, REALTORS®) and/or the quality of services they provide (MLS®, Multiple Listing Service®)

Listing information last updated on November 1st, 2025 at 12:02pm MDT