

# **\$1,575,000 - Rr14 & 15 Between Hwy 616 & Hwy 616x, Rural Leduc County**

MLS® #E4461047

**\$1,575,000**

0 Bedroom, 0.00 Bathroom,  
Rural on 236.88 Acres

None, Rural Leduc County, AB

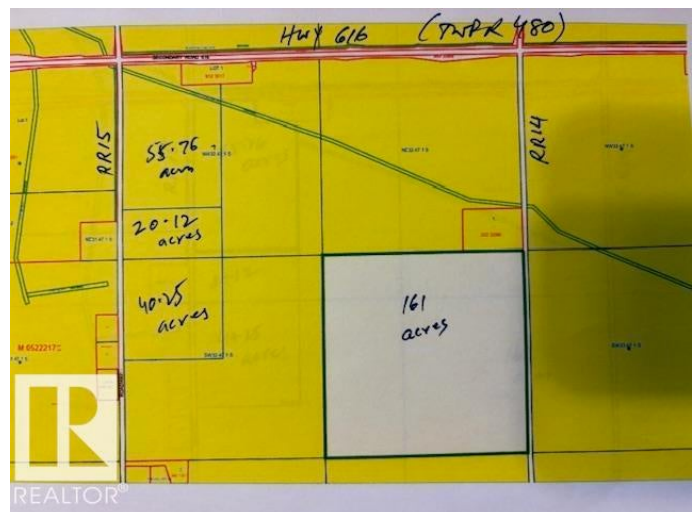
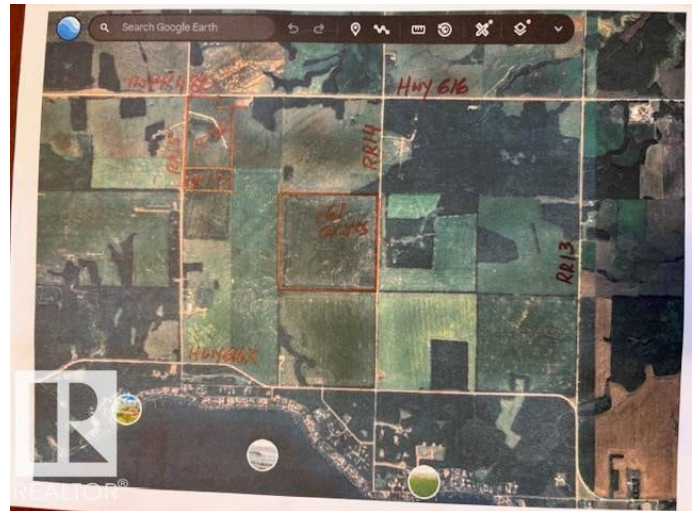
Amazing opportunity to own 236.88 acres â€“  
Three parcels of 161 acres, 55.76 acres and  
20.12 acres each. - 161 acres are located on  
RR14 between HWY616 and HWY 616X. Half  
a mile north of PIGEONS LAKE. It is a CROP  
LAND. - 55.76 acres are located on SE  
Corner of RR15 & HWY 616 (TWPR 480).  
These are ROLLING LANDS. Good for HAY  
and PASTURE. - 20.12 acres are located  
adjoining to 55.76 acres (South of 55.76 acres  
on RR15) on RR15 between HWY 616 & HWY  
616X by PIGEONS LAKE. These are CROP  
LANDS.

## **Essential Information**

MLS® #	E4461047
Price	\$1,575,000
Bathrooms	0.00
Acres	236.88
Type	Rural
Sub-Type	Vacant Lot/Land
Status	Active

## **Community Information**

Address	Rr14 & 15 Between Hwy 616
Area	Rural Leduc County
Subdivision	None



City	Rural Leduc County
County	ALBERTA
Province	AB
Postal Code	T9E 2P0

### **Additional Information**

Date Listed	October 6th, 2025
Days on Market	3
Zoning	Zone 90

DATA IS DEEMED RELIABLE BUT IS NOT GUARANTEED ACCURATE BY THE REALTORS® ASSOCIATION OF EDMONTON. COPYRIGHT 2025 BY THE REALTORS® ASSOCIATION OF EDMONTON. ALL RIGHTS RESERVED. Trademarks are owned or controlled by the Canadian Real Estate Association (CREA) and identify real estate professionals who are members of CREA (REALTOR®, REALTORS®) and/or the quality of services they provide (MLS®, Multiple Listing Service®)

Listing information last updated on October 8th, 2025 at 10:47pm MDT