

\$2,500 - 9052 153 Street, Edmonton

MLS® #E4447352

\$2,500

4 Bedroom, 2.00 Bathroom, 672 sqft

Rental on 0.00 Acres

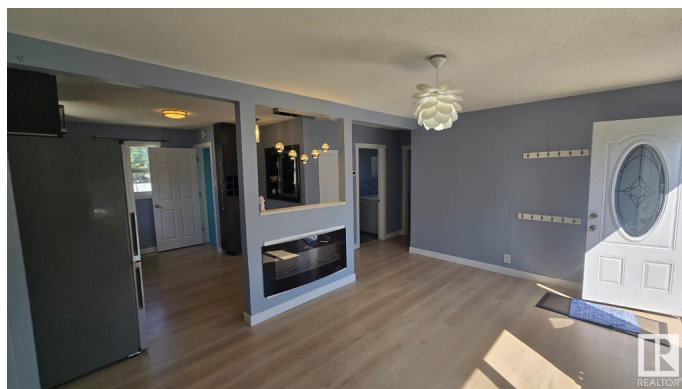
Jasper Park, Edmonton, AB

Available August 1st! Located in the desirable Jasper Park community, this well-maintained detached bungalow is the perfect rental opportunity. Enjoy a spacious layout with a fully finished basement that includes a stylish bar area, wine rack, and wine coolerâ€”great for relaxing or entertaining. The main level features bright living spaces and comfortable bedrooms. Step outside to an ample yard, ideal for summer gatherings or quiet evenings. Includes a detached single garage with convenient paved road access. Situated near excellent amenities including schools, parks, shopping, public transit, and just minutes from West Edmonton Mall. This home offers great value and a prime location for families or professionals. Non-smoking home. Pets negotiable

Built in 1956

Essential Information

MLS® #	E4447352
Price	\$2,500
Bedrooms	4
Bathrooms	2.00
Full Baths	2
Square Footage	672
Acres	0.00
Year Built	1956



Type	Rental
Style	Bungalow
Status	Active

Community Information

Address	9052 153 Street
Area	Edmonton
Subdivision	Jasper Park
City	Edmonton
County	ALBERTA
Province	AB
Postal Code	T5R 1P4

Amenities

Parking	Single Garage Detached
---------	------------------------

Interior

Appliances	Dishwasher-Built-In, Dryer, Oven-Microwave, Refrigerator, Stove-Electric, Washer
------------	--

Additional Information

Date Listed	July 11th, 2025
Days on Market	22
Zoning	Zone 22

DATA IS DEEMED RELIABLE BUT IS NOT GUARANTEED ACCURATE BY THE REALTORS® ASSOCIATION OF EDMONTON. COPYRIGHT 2025 BY THE REALTORS® ASSOCIATION OF EDMONTON. ALL RIGHTS RESERVED. Trademarks are owned or controlled by the Canadian Real Estate Association (CREA) and identify real estate professionals who are members of CREA (REALTOR®, REALTORS®) and/or the quality of services they provide (MLS®, Multiple Listing Service®)

Listing information last updated on August 2nd, 2025 at 3:32am MDT