

# **\$89,000 - 58121 Lily Lake- 34 Edith Road, Rural Sturgeon County**

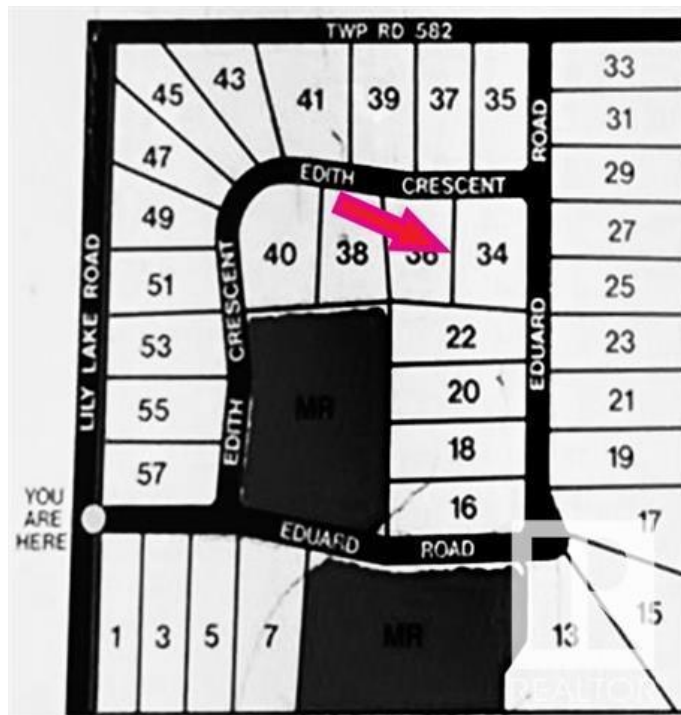
MLS® #E4446159

**\$89,000**

0 Bedroom, 0.00 Bathroom,  
Rural on 3.27 Acres

Braun Village, Rural Sturgeon County, AB

Affordable land~ Great location to build your new home~ Enjoy the freedom and seclusion of acreage living on this huge 3.27-acre corner lot in Braun Village~ Power and Gas at property line~ Short 15 min commute to Bon Accord and Gibbons~35 Mins to Edmonton. Priced right!



## **Essential Information**

MLS® #	E4446159
Price	\$89,000
Bathrooms	0.00
Acres	3.27
Type	Rural
Sub-Type	Vacant Lot/Land
Status	Active

## **Community Information**

Address	58121 Lily Lake- 34 Edith Ro
Area	Rural Sturgeon County
Subdivision	Braun Village
City	Rural Sturgeon County
County	ALBERTA
Province	AB
Postal Code	T0G 1L0

## **Exterior**



Exterior Features    Backs Onto Park/Trees, Flat Site, Treed Lot

**Additional Information**

Date Listed                July 3rd, 2025  
Days on Market        13  
Zoning                      Zone 60

DATA IS DEEMED RELIABLE BUT IS NOT GUARANTEED ACCURATE BY THE REALTORS® ASSOCIATION OF EDMONTON. COPYRIGHT 2025 BY THE REALTORS® ASSOCIATION OF EDMONTON. ALL RIGHTS RESERVED.Trademarks are owned or controlled by the Canadian Real Estate Association (CREA) and identify real estate professionals who are members of CREA (REALTOR®, REALTORS®) and/or the quality of services they provide (MLS®, Multiple Listing Service®)  
Listing information last updated on July 16th, 2025 at 9:18pm MDT