

\$268,000 - 10027 173 Ave, Edmonton

MLS® #E4445625

\$268,000

3 Bedroom, 1.50 Bathroom, 1,149 sqft
Condo / Townhouse on 0.00 Acres

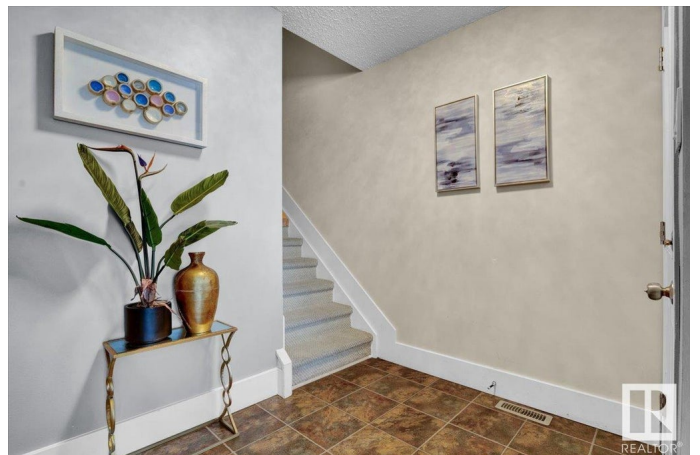
Baturyn, Edmonton, AB

Youâ€™ll LOVE this FAMILY-FRIENDLY community of BATURYN! Nestled in a MATURE, ESTABLISHED NEIGHBOURHOOD, this well-kept half duplex is an ideal STARTER HOME or INVESTMENT PROPERTY. It features 3 LARGE ABOVE-GRADE BEDROOMS and a FULLY FINISHED BASEMENT with great flexibility. The MAIN FLOOR includes a BRIGHT living room, dining area, main floor bedroom, bathroom, and a kitchen that opens to a FENCED SOUTHWEST-FACING BACKYARD. Upstairs offers 2 SPACIOUS BEDROOMS and a 4-PIECE BATHROOM. The basement includes a FLEX ROOM (perfect as a guest room, gym, or hobby space), a FAMILY/REC ROOM, LAUNDRY, and a BONUS DEN or STUDY NOOK, ideal for a home office. Includes TWO PARKING STALLS, 1 located at back with concrete pad and one located in front of home. Home is conveniently located near schools, parks, shopping, transit and quick access to the Anthony Henday. Donâ€™t miss this opportunity!

Built in 1979

Essential Information

| | |
|--------|-----------|
| MLS® # | E4445625 |
| Price | \$268,000 |



| | |
|----------------|-------------------|
| Bedrooms | 3 |
| Bathrooms | 1.50 |
| Full Baths | 1 |
| Half Baths | 1 |
| Square Footage | 1,149 |
| Acres | 0.00 |
| Year Built | 1979 |
| Type | Condo / Townhouse |
| Sub-Type | Half Duplex |
| Style | 2 Storey |
| Status | Active |

Community Information

| | |
|-------------|---------------|
| Address | 10027 173 Ave |
| Area | Edmonton |
| Subdivision | Baturyn |
| City | Edmonton |
| County | ALBERTA |
| Province | AB |
| Postal Code | T5X 3Y1 |

Amenities

| | |
|-----------|---|
| Amenities | Off Street Parking, Hot Water Natural Gas, Parking-Visitor, Patio |
| Parking | 2 Outdoor Stalls, Parking Pad Cement/Paved, Rear Drive Access |

Interior

| | |
|--------------|---|
| Appliances | Dryer, Hood Fan, Refrigerator, Stove-Electric, Washer, Window Coverings |
| Heating | Forced Air-1, Natural Gas |
| Stories | 3 |
| Has Basement | Yes |
| Basement | Full, Finished |

Exterior

| | |
|-------------------|--|
| Exterior | Wood, Stucco |
| Exterior Features | Back Lane, Fenced, Flat Site, Landscaped, Paved Lane, Playground Nearby, Public Transportation, Schools, Shopping Nearby |
| Roof | Asphalt Shingles |
| Construction | Wood, Stucco |

Foundation Concrete Perimeter

Additional Information

Date Listed July 3rd, 2025
Days on Market 35
Zoning Zone 27
Condo Fee \$405

DATA IS DEEMED RELIABLE BUT IS NOT GUARANTEED ACCURATE BY THE REALTORS® ASSOCIATION OF EDMONTON. COPYRIGHT 2025 BY THE REALTORS® ASSOCIATION OF EDMONTON. ALL RIGHTS RESERVED.Trademarks are owned or controlled by the Canadian Real Estate Association (CREA) and identify real estate professionals who are members of CREA (REALTOR®, REALTORS®) and/or the quality of services they provide (MLS®, Multiple Listing Service®)
Listing information last updated on August 7th, 2025 at 6:47pm MDT