

\$839,000 - 7248 May Road, Edmonton

MLS® #E4444485

\$839,000

4 Bedroom, 4.00 Bathroom, 2,331 sqft

Single Family on 0.00 Acres

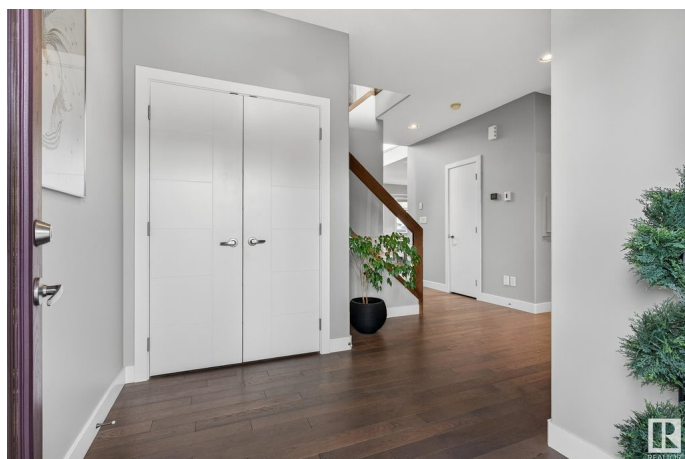
Magrath Heights, Edmonton, AB

FORMER SHOWHOME ALERT! This fully loaded **TRIPLE GARAGE** two-storey by Kimberley Homes offers exceptional upgrades and thoughtful design. The open-to-below floorplan, expansive windows, and soaring ceilings fill the space with natural light. Enjoy a chef's kitchen, grand living room with full-height fireplace, king-sized primary suite with spa-like ensuite, walk-in closet, and private den. Upstairs features a spacious bonus room and two bedrooms; the finished basement includes 9' ceilings, a huge rec room, fourth bedroom, full bath, and access to the oversized triple garage. Additional perks: A/C, tankless hot water, central vac, whole-home audio, ethernet, professional landscaping, and direct access to the neighbourhood's beautiful trails and ponds. Close to top schools, shops, Whitemud & Henday. Luxury, comfort, and nature all in one stunning package!

Built in 2015

Essential Information

MLS® #	E4444485
Price	\$839,000
Bedrooms	4
Bathrooms	4.00
Full Baths	4



Square Footage	2,331
Acres	0.00
Year Built	2015
Type	Single Family
Sub-Type	Half Duplex
Style	2 Storey
Status	Active

Community Information

Address	7248 May Road
Area	Edmonton
Subdivision	Magrath Heights
City	Edmonton
County	ALBERTA
Province	AB
Postal Code	T6R 0T2

Amenities

Amenities	See Remarks
Parking	Triple Garage Attached

Interior

Interior Features	ensuite bathroom
Appliances	Air Conditioning-Central, Dishwasher-Built-In, Dryer, Garage Control, Garage Opener, Refrigerator, Stove-Gas, Washer, Window Coverings
Heating	Forced Air-1, Natural Gas
Stories	3
Has Basement	Yes
Basement	Full, Finished

Exterior

Exterior	Wood, Stone
Exterior Features	See Remarks
Roof	Asphalt Shingles
Construction	Wood, Stone
Foundation	Concrete Perimeter

Additional Information

Date Listed	June 26th, 2025
-------------	-----------------

Days on Market	22
Zoning	Zone 14
HOA Fees	225
HOA Fees Freq.	Annually

DATA IS DEEMED RELIABLE BUT IS NOT GUARANTEED ACCURATE BY THE REALTORS® ASSOCIATION OF EDMONTON. COPYRIGHT 2025 BY THE REALTORS® ASSOCIATION OF EDMONTON. ALL RIGHTS RESERVED. Trademarks are owned or controlled by the Canadian Real Estate Association (CREA) and identify real estate professionals who are members of CREA (REALTOR®, REALTORS®) and/or the quality of services they provide (MLS®, Multiple Listing Service®)

Listing information last updated on July 18th, 2025 at 2:17am MDT