

## \$249,900 - 28 1179 Summerside Drive, Edmonton

MLS® #E4442769

**\$249,900**

2 Bedroom, 2.00 Bathroom, 899 sqft

Condo / Townhouse on 0.00 Acres

Summerside, Edmonton, AB

Lovely 898 sq ft bungalow-style condo in the vibrant community of Summerside! This well-maintained home features a spacious layout with a large living room, laminate flooring, and a cozy gas fireplace. The bright kitchen offers ample cabinetry, pantry space, all appliances included, and a generous dining area perfect for entertaining. There are two bedrooms and a 3-piece main bath; the primary suite includes a walk-in closet and a 4-piece ensuite. Enjoy the convenience of in-suite laundry and an outdoor storage unit. Plus, water and sewer are included in the condo fees! Step out to your private patio with natural gas BBQ hookup—ideal for summer evenings! Affordable condo living with fantastic amenities: exclusive access to Summerside Lake, tennis and basketball courts, beach volleyball, skating, and swimming. Shopping, dining, parks, and playgrounds are just minutes away. Comes with an outdoor parking stall. A perfect opportunity for first-time buyers or investors—don't miss out!

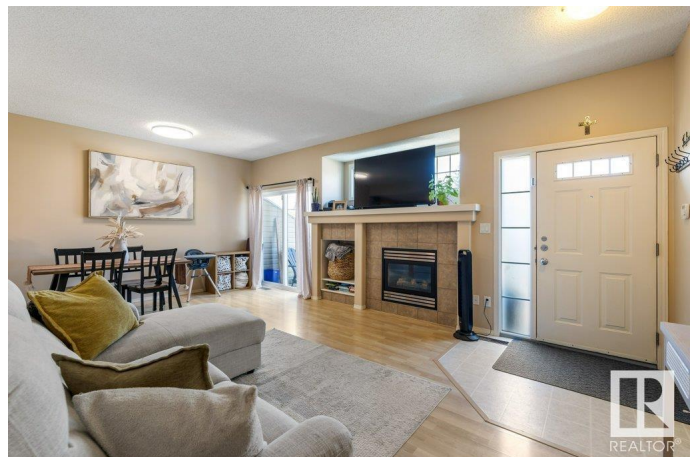
Built in 2005

### Essential Information

MLS® # E4442769

Price \$249,900

Bedrooms 2



Bathrooms	2.00
Full Baths	2
Square Footage	899
Acres	0.00
Year Built	2005
Type	Condo / Townhouse
Sub-Type	Carriage
Style	Bungalow
Status	Active

### Community Information

Address	28 1179 Summerside Drive
Area	Edmonton
Subdivision	Summerside
City	Edmonton
County	ALBERTA
Province	AB
Postal Code	T6X 1K1

### Amenities

Amenities	Lake Privileges, Parking-Visitor, Patio, See Remarks
Parking	Stall

### Interior

Interior Features	ensuite bathroom
Appliances	Dishwasher-Built-In, Dryer, Garburator, Microwave Hood Fan, Refrigerator, Stove-Electric, Washer
Heating	Forced Air-1, Natural Gas
Fireplace	Yes
Fireplaces	Mantel, Tile Surround
Stories	1
Has Basement	Yes
Basement	None, No Basement

### Exterior

Exterior	Wood, Stone, Vinyl
Exterior Features	Fenced, Golf Nearby, Landscaped, Playground Nearby, Public Transportation, Schools, Shopping Nearby, See Remarks
Roof	Asphalt Shingles

Construction	Wood, Stone, Vinyl
Foundation	Concrete Perimeter

**Additional Information**

Date Listed	June 17th, 2025
Days on Market	6
Zoning	Zone 53
HOA Fees	453.02
HOA Fees Freq.	Annually
Condo Fee	\$302

DATA IS DEEMED RELIABLE BUT IS NOT GUARANTEED ACCURATE BY THE REALTORS® ASSOCIATION OF EDMONTON. COPYRIGHT 2025 BY THE REALTORS® ASSOCIATION OF EDMONTON. ALL RIGHTS RESERVED.Trademarks are owned or controlled by the Canadian Real Estate Association (CREA) and identify real estate professionals who are members of CREA (REALTOR®, REALTORS®) and/or the quality of services they provide (MLS®, Multiple Listing Service®)

Listing information last updated on June 23rd, 2025 at 6:47pm MDT