

\$419,900 - 72 Greenbury Crescent, Spruce Grove

MLS® #E4442209

\$419,900

3 Bedroom, 2.50 Bathroom, 1,405 sqft

Single Family on 0.00 Acres

Greenbury, Spruce Grove, AB

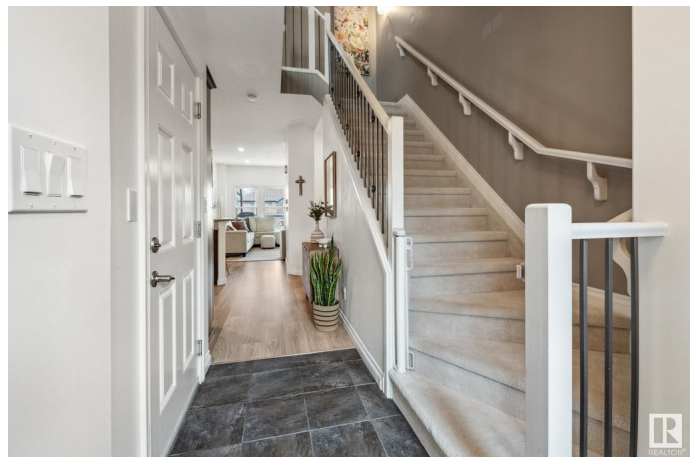
STUNNING- fully finished 1405 Sq ft 2 storey 1/2 duplex in sought after Greenbury backing onto a walking path that leads to Jubilee Park. Open concept plan with Chefs dream kitchen, Granite Counter Tops, Large functional Island with loads of cabinetry & corner pantry. Gorgeous great room features large windows allowing in tons of natural light & Gas F/P. Nice sized Dining area has patio doors that lead to an amazing deck with a custom built Pergola & Privacy wall. Entire Main level also has 9 ft ceilings & encompasses Laminate flooring. Upstairs is the Primary Suite with 3 pce ensuite & walk in closet. 2 Additional bedrooms, 4 pce bath & separate Laundry Room. Fully finished basement is complete with a large Rec room which provides an additional 556 sq ft of living space. great for the growing family!!! Single attached garage & a fully landscaped & fence back yard also adds to the value of this Gem of a home. Almost forgot- Central A/C for those hot Summer Nights. Shows a 10/10 & priced to Sell..

Built in 2012

Essential Information

MLS® # E4442209

Price \$419,900



Bedrooms	3
Bathrooms	2.50
Full Baths	2
Half Baths	1
Square Footage	1,405
Acres	0.00
Year Built	2012
Type	Single Family
Sub-Type	Half Duplex
Style	2 Storey
Status	Active

Community Information

Address	72 Greenbury Crescent
Area	Spruce Grove
Subdivision	Greenbury
City	Spruce Grove
County	ALBERTA
Province	AB
Postal Code	T7X 0L9

Amenities

Amenities	See Remarks
Parking	Single Garage Attached

Interior

Interior Features	ensuite bathroom
Appliances	Air Conditioning-Central, Dishwasher-Built-In, Garage Control, Garage Opener, Microwave Hood Fan, Refrigerator, Stove-Electric, Water Softener, Window Coverings
Heating	Forced Air-1, Natural Gas
Stories	3
Has Basement	Yes
Basement	Full, Finished

Exterior

Exterior	Wood, Stone, Vinyl
Exterior Features	Fenced, Golf Nearby, Landscaped, Playground Nearby, Schools
Roof	Asphalt Shingles

Construction	Wood, Stone, Vinyl
Foundation	Concrete Perimeter

Additional Information

Date Listed	June 12th, 2025
Days on Market	5
Zoning	Zone 91

DATA IS DEEMED RELIABLE BUT IS NOT GUARANTEED ACCURATE BY THE REALTORS® ASSOCIATION OF EDMONTON. COPYRIGHT 2025 BY THE REALTORS® ASSOCIATION OF EDMONTON. ALL RIGHTS RESERVED.Trademarks are owned or controlled by the Canadian Real Estate Association (CREA) and identify real estate professionals who are members of CREA (REALTOR®, REALTORS®) and/or the quality of services they provide (MLS®, Multiple Listing Service®)

Listing information last updated on June 17th, 2025 at 2:32pm MDT