

\$425,000 - 4529 154 Avenue, Edmonton

MLS® #E4441614

\$425,000

4 Bedroom, 2.00 Bathroom, 1,018 sqft
Single Family on 0.00 Acres

Brintnell, Edmonton, AB

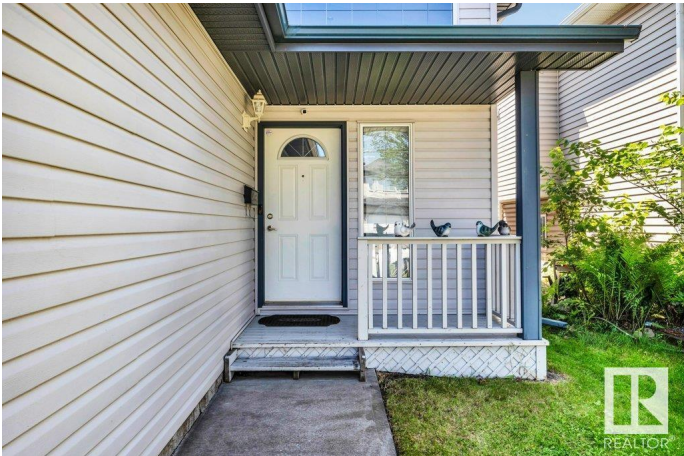
The perfect entry-level single-family home. This raised bungalow is ideal for first-time buyers or downsizing couple. Offering 1000 sqft+ on each level, both with 2 bedrooms and a full bathroom. The property is in excellent condition and provides spacious living areas on both levels. Truly enjoy the benefits of a front attached garage and driveway. Located in a desirable area of Britnell with exceptional access to shopping, major roads and schools. Itâ€™s a delightful neighborhood to make home.

Built in 2005

Essential Information

MLS® #	E4441614
Price	\$425,000
Bedrooms	4
Bathrooms	2.00
Full Baths	2
Square Footage	1,018
Acres	0.00
Year Built	2005
Type	Single Family
Sub-Type	Detached Single Family
Style	Raised Bungalow
Status	Active

Community Information



Address	4529 154 Avenue
Area	Edmonton
Subdivision	Brintnell
City	Edmonton
County	ALBERTA
Province	AB
Postal Code	T5Y 3H3

Amenities

Amenities	Deck
Parking Spaces	4
Parking	Double Garage Attached

Interior

Appliances	Dishwasher-Built-In, Dryer, Hood Fan, Refrigerator, Stove-Electric, Washer
Heating	Forced Air-1, Natural Gas
Stories	2
Has Basement	Yes
Basement	Full, Finished

Exterior

Exterior	Wood, Vinyl
Exterior Features	Fenced, Playground Nearby, Public Swimming Pool, Public Transportation, Schools, Shopping Nearby
Roof	Asphalt Shingles
Construction	Wood, Vinyl
Foundation	Concrete Perimeter

Additional Information

Date Listed	June 10th, 2025
Days on Market	10
Zoning	Zone 03

DATA IS DEEMED RELIABLE BUT IS NOT GUARANTEED ACCURATE BY THE REALTORS® ASSOCIATION OF EDMONTON. COPYRIGHT 2025 BY THE REALTORS® ASSOCIATION OF EDMONTON. ALL RIGHTS RESERVED. Trademarks are owned or controlled by the Canadian Real Estate Association (CREA) and identify real estate professionals who are members of CREA (REALTOR®, REALTORS®) and/or the quality of services they provide (MLS®, Multiple Listing Service®)

Listing information last updated on June 20th, 2025 at 3:18pm MDT