

\$429,900 - 2813 18a Avenue, Edmonton

MLS® #E4441210

\$429,900

4 Bedroom, 3.50 Bathroom, 1,274 sqft

Single Family on 0.00 Acres

Laurel, Edmonton, AB

LOCATION, LOCATION, LOCATION !!!!

Welcome to this beautiful 2-storey Landmark built half duplex in the prestigious community of LAUREL. Close to Shopping Stores, Hospital, Public transportation, White-mud freeway and Anthony Henday. this a . This beautiful half duplex offers a cozy living room, a perfect dining area and a beautiful kitchen with stainless steel appliances. The 2-piece washroom completes the main floor. Upstairs you will find 2 spacious bedrooms and a master bedroom with an ensuite bathroom and a his and her closet. A second full bathroom completes the upper floor. The Basement is FULLY FINISHED with a bedroom, a full bathroom and a bar area. An Amazing home for a perfect family. A very good opportunity for First Time Home Buyer's & Investors. Recent upgrades enhance this home's appeal: New Paint, New Vinyl Floor, New Tankless water tank, New Deck, New fridge, Water Softener, Water Filter etc.

Built in 2011

Essential Information

MLS® #	E4441210
Price	\$429,900
Bedrooms	4
Bathrooms	3.50



Full Baths	3
Half Baths	1
Square Footage	1,274
Acres	0.00
Year Built	2011
Type	Single Family
Sub-Type	Half Duplex
Style	2 Storey
Status	Active

Community Information

Address	2813 18a Avenue
Area	Edmonton
Subdivision	Laurel
City	Edmonton
County	ALBERTA
Province	AB
Postal Code	T6T 0N8

Amenities

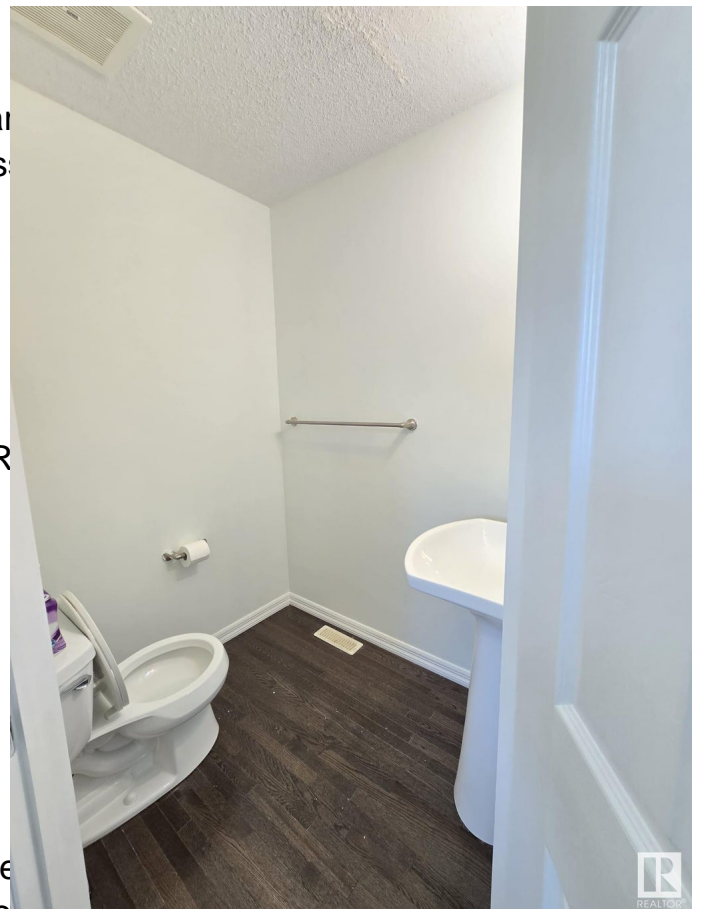
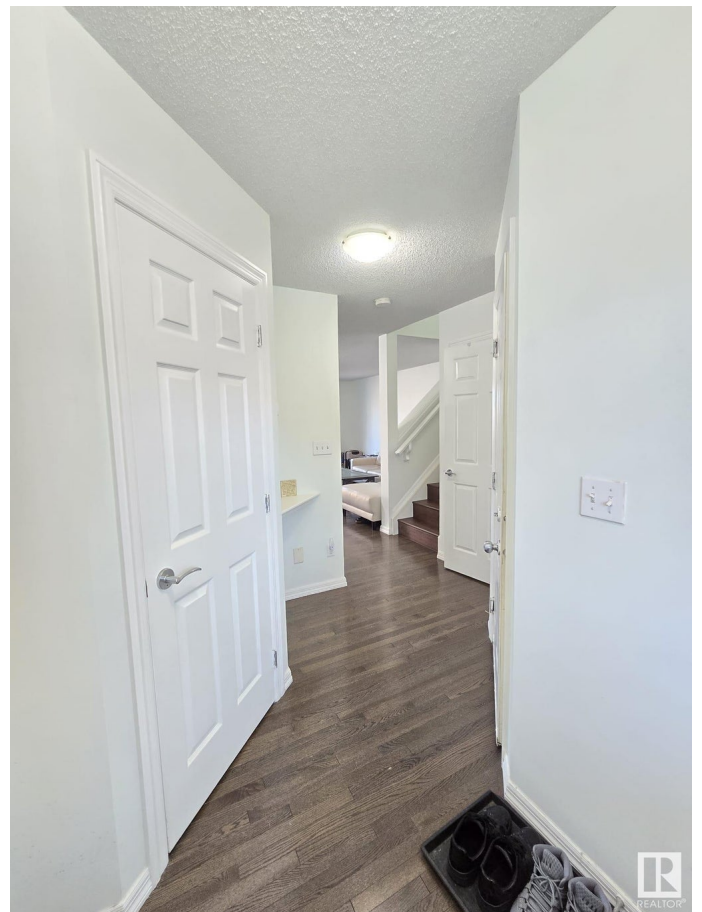
Amenities	On Street Parking, Bar, Car Wash, Dishwasher, Dryer, Electric Range, Hardwood Floors, In-Unit Laundry, Smoke, Hot Water Tankless Water Heater, Recreation Room/Centre
Parking	Single Garage Attached

Interior

Interior Features	ensuite bathroom
Appliances	Dishwasher-Built-In, Dryer, Range, Refrigerator, Stove, Washer
Heating	Forced Air-1, Natural Gas
Stories	3
Has Basement	Yes
Basement	Full, Finished

Exterior

Exterior	Wood, Vinyl
Exterior Features	Fenced, Flat Site, Landscaped, Playground Nearby, Public Swimming Pool, Public Transportation, Schools, Shopping Nearby
Roof	Asphalt Shingles



Construction	Wood, Vinyl
Foundation	Concrete Perimeter

Additional Information

Date Listed	June 8th, 2025
Days on Market	47
Zoning	Zone 30

DATA IS DEEMED RELIABLE BUT IS NOT GUARANTEED ACCURATE BY THE REALTORS® ASSOCIATION OF EDMONTON. COPYRIGHT 2025 BY THE REALTORS® ASSOCIATION OF EDMONTON. ALL RIGHTS RESERVED.Trademarks are owned or controlled by the Canadian Real Estate Association (CREA) and identify real estate professionals who are members of CREA (REALTOR®, REALTORS®) and/or the quality of services they provide (MLS®, Multiple Listing Service®)

Listing information last updated on July 25th, 2025 at 9:02pm MDT