

\$420,000 - 1213 Gillespie Crescent, Edmonton

MLS® #E4439048

\$420,000

4 Bedroom, 3.00 Bathroom, 1,040 sqft

Single Family on 0.00 Acres

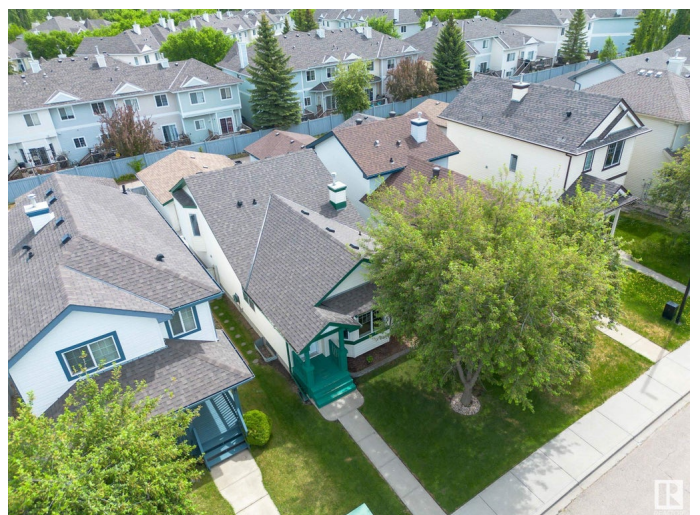
Glastonbury, Edmonton, AB

Charming HOME-2-LOVE in Glastonbury is ready to welcome your family. Set your sights on this 4-level spit home showcasing over 1985 sqft of living space with 4-bedrooms (2 upper-level, 2 lower-levels) & 3 full bathrooms. Situated in a cut de sac, tree-line street with west facing back yard for great summer sun & back entertaining deck. Steps away from walking paths & trails @ Guinevere Park & local amenities. Recent updated include new roof(2021), central A/C(2024) & luxury vinyl plank flooring. Beautiful natural light on the main floor with vaulted ceilings and huge windows. Kitchen is a great space with pantry and spacious dining area. The flex space that is perfect for a home office or kids play room. The third level is open with glass panels and features a cozy second living room with corner gas fireplace. The basement offers a large room, full bath and bar area. Fully fenced and oversized double garage complete this wonderful home! GREAT MUST SEE HOME!

Built in 2002

Essential Information

| | |
|-----------|-----------|
| MLS® # | E4439048 |
| Price | \$420,000 |
| Bedrooms | 4 |
| Bathrooms | 3.00 |



| | |
|----------------|------------------------|
| Full Baths | 3 |
| Square Footage | 1,040 |
| Acres | 0.00 |
| Year Built | 2002 |
| Type | Single Family |
| Sub-Type | Detached Single Family |
| Style | 4 Level Split |
| Status | Active |

Community Information

| | |
|-------------|-------------------------|
| Address | 1213 Gillespie Crescent |
| Area | Edmonton |
| Subdivision | Glastonbury |
| City | Edmonton |
| County | ALBERTA |
| Province | AB |
| Postal Code | T5T 6M5 |

Amenities

| | |
|-----------|---|
| Amenities | On Street Parking, Air Conditioner, Ceiling 9 ft., Deck, Detectors Smoke, Front Porch, Television Connection, Vaulted Ceiling, Vinyl Windows, Wet Bar |
| Parking | Double Garage Detached, Over Sized, Rear Drive Access |

Interior

| | |
|-------------------|---|
| Interior Features | ensuite bathroom |
| Appliances | Air Conditioning-Central, Dishwasher-Built-In, Dryer, Garage Control, Garage Opener, Refrigerator, Stove-Electric, Window Coverings |
| Heating | Forced Air-1, Natural Gas |
| Fireplace | Yes |
| Fireplaces | Corner, Insert, Mantel |
| Stories | 4 |
| Has Basement | Yes |
| Basement | Full, Finished |

Exterior

| | |
|-------------------|--|
| Exterior | Wood, Vinyl |
| Exterior Features | Back Lane, Fenced, Golf Nearby, Landscaped, Paved Lane, Playground Nearby, Public Transportation, Schools, Shopping Nearby |

| | |
|--------------|--------------------|
| Roof | Asphalt Shingles |
| Construction | Wood, Vinyl |
| Foundation | Concrete Perimeter |

Additional Information

| | |
|----------------|----------------|
| Date Listed | May 29th, 2025 |
| Days on Market | 11 |
| Zoning | Zone 58 |
| HOA Fees | 175 |
| HOA Fees Freq. | Annually |

DATA IS DEEMED RELIABLE BUT IS NOT GUARANTEED ACCURATE BY THE REALTORS® ASSOCIATION OF EDMONTON. COPYRIGHT 2025 BY THE REALTORS® ASSOCIATION OF EDMONTON. ALL RIGHTS RESERVED.Trademarks are owned or controlled by the Canadian Real Estate Association (CREA) and identify real estate professionals who are members of CREA (REALTOR®, REALTORS®) and/or the quality of services they provide (MLS®, Multiple Listing Service®)

Listing information last updated on June 9th, 2025 at 1:02am MDT