

\$309,900 - 308 10530 56 Avenue, Edmonton

MLS® #E4438318

\$309,900

2 Bedroom, 2.00 Bathroom, 980 sqft

Condo / Townhouse on 0.00 Acres

Pleasantview (Edmonton), Edmonton, AB

Spacious Corner Unit with Open Views in Pleasantview Welcome to this beautifully maintained 2 bed, 2 bath corner condo in the desirable community of Pleasantview. This bright, open-concept unit features a spacious balcony overlooking green space, complete with a gas hookup—perfect for morning coffee or evening BBQs. The kitchen offers a massive island with bar seating, stainless steel appliances, ample counter space, and a mosaic tile backsplash. The spacious primary bedroom includes a walk-in closet and a private 4-piece ensuite, while the second bedroom is great for guests or a home office. Additional features include hardwood and ceramic tile floors, central A/C, in-suite laundry, and a heated underground parking stall near the elevator. A secure storage cage and wash bay add convenience. Minutes from Southgate Mall, Whitemud Drive, Calgary Trail, and transit—this stylish, move-in-ready home offers exceptional value in a prime location. Quick possession available!

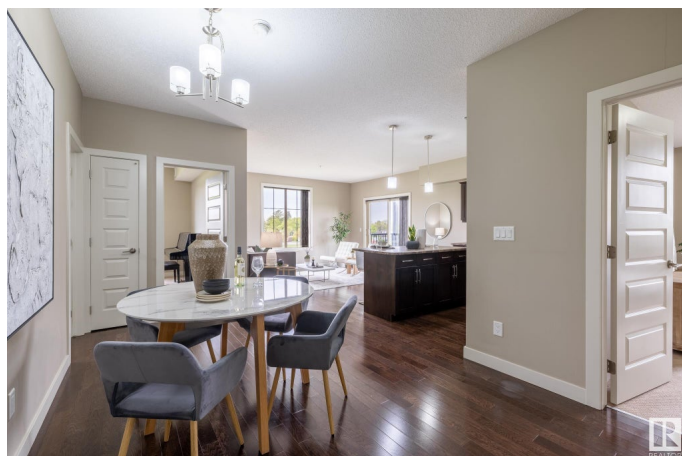
Built in 2010

Essential Information

MLS® # E4438318

Price \$309,900

Bedrooms 2



Bathrooms	2.00
Full Baths	2
Square Footage	980
Acres	0.00
Year Built	2010
Type	Condo / Townhouse
Sub-Type	Lowrise Apartment
Style	Single Level Apartment
Status	Active

Community Information

Address	308 10530 56 Avenue
Area	Edmonton
Subdivision	Pleasantview (Edmonton)
City	Edmonton
County	ALBERTA
Province	AB
Postal Code	T6H 0X7

Amenities

Amenities	Air Conditioner, Storage Cage, Natural Gas BBQ Hookup
Parking	Heated, Parkade, Stall, Underground

Interior

Interior Features	ensuite bathroom
Appliances	Air Conditioning-Central, Dishwasher - Energy Star, Dryer, Freezer, Hood Fan, Oven-Built-In, Refrigerator, Stove-Countertop Electric, Washer, Window Coverings, Curtains and Blinds
Heating	Forced Air-1, Natural Gas
# of Stories	4
Stories	1
Has Basement	Yes
Basement	None, No Basement

Exterior

Exterior	Wood, Stucco
Exterior Features	Backs Onto Park/Trees, Corner Lot, Playground Nearby, Schools, Shopping Nearby, Ski Hill Nearby
Roof	Asphalt Shingles

Construction	Wood, Stucco
Foundation	Concrete Perimeter

Additional Information

Date Listed	May 23rd, 2025
Days on Market	10
Zoning	Zone 15
Condo Fee	\$511

DATA IS DEEMED RELIABLE BUT IS NOT GUARANTEED ACCURATE BY THE REALTORS® ASSOCIATION OF EDMONTON. COPYRIGHT 2025 BY THE REALTORS® ASSOCIATION OF EDMONTON. ALL RIGHTS RESERVED.Trademarks are owned or controlled by the Canadian Real Estate Association (CREA) and identify real estate professionals who are members of CREA (REALTOR®, REALTORS®) and/or the quality of services they provide (MLS®, Multiple Listing Service®)

Listing information last updated on June 2nd, 2025 at 3:02pm MDT