

\$399,900 - 8523 138 Avenue, Edmonton

MLS® #E4438209

\$399,900

4 Bedroom, 2.00 Bathroom, 975 sqft

Single Family on 0.00 Acres

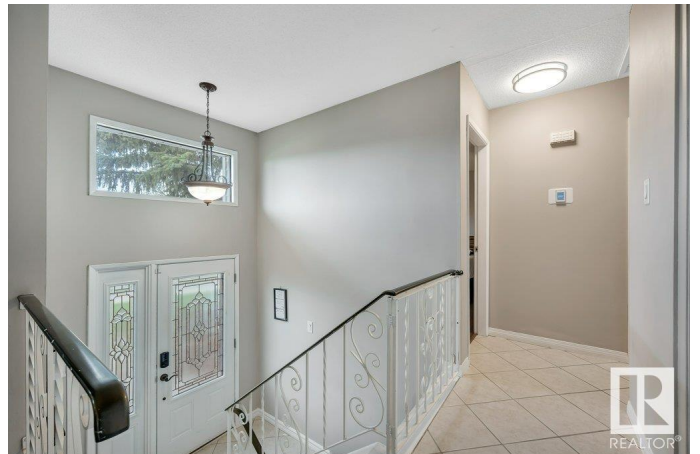
Northmount (Edmonton), Edmonton, AB

Extensively UPDATED and well maintained bi-level in a family-friendly neighbourhood! This MOVE-IN READY 4 bedrooms, 2-bath home with an OVERSIZED DOUBLE GARAGE (24 x 24) with additional RV Parking features a bright main floor with an updated kitchen with newer appliances and counters, 2 bedrooms and a refreshed 4-pc bathroom. Enjoy year-round comfort with CENTRAL A/C! A fully finished basement with another 2 good sized bedrooms, a 3-pc bath and a cozy gas fireplace in your second living room. Enjoy a south-facing flat fenced backyard with a newer deck for our upcoming hot summer days! Additional upgrades include new washer/dryer, windows, concrete steps, fence, gutters, and sod. Close to daycares, schools, shopping, and transit. Thoughtfully upgraded with comfort and convenience in mind—just move in and enjoy!

Built in 1971

Essential Information

MLS® #	E4438209
Price	\$399,900
Bedrooms	4
Bathrooms	2.00
Full Baths	2
Square Footage	975



Acres	0.00
Year Built	1971
Type	Single Family
Sub-Type	Detached Single Family
Style	Bi-Level
Status	Active

Community Information

Address	8523 138 Avenue
Area	Edmonton
Subdivision	Northmount (Edmonton)
City	Edmonton
County	ALBERTA
Province	AB
Postal Code	T5E 2A3

Amenities

Amenities	Air Conditioner, Deck, Hot Water Natural Gas, No Smoking Home
Parking	Double Garage Detached, Over Sized

Interior

Appliances	Air Conditioning-Central, Dishwasher-Built-In, Dryer, Freezer, Microwave Hood Fan, Refrigerator, Stove-Electric, Washer, Window Coverings
Heating	Forced Air-1, Natural Gas
Fireplace	Yes
Fireplaces	Corner
Stories	2
Has Basement	Yes
Basement	Full, Finished

Exterior

Exterior	Wood, Vinyl
Exterior Features	Back Lane, Fenced, Flat Site, Playground Nearby, Public Transportation, Schools, Shopping Nearby, See Remarks
Roof	Asphalt Shingles
Construction	Wood, Vinyl
Foundation	Concrete Perimeter

Additional Information

Date Listed May 23rd, 2025

Days on Market 2

Zoning Zone 02

DATA IS DEEMED RELIABLE BUT IS NOT GUARANTEED ACCURATE BY THE REALTORS® ASSOCIATION OF EDMONTON. COPYRIGHT 2025 BY THE REALTORS® ASSOCIATION OF EDMONTON. ALL RIGHTS RESERVED. Trademarks are owned or controlled by the Canadian Real Estate Association (CREA) and identify real estate professionals who are members of CREA (REALTOR®, REALTORS®) and/or the quality of services they provide (MLS®, Multiple Listing Service®)

Listing information last updated on May 25th, 2025 at 12:02pm MDT