

\$159,900 - 1152 Saddleback Road, Edmonton

MLS® #E4438208

\$159,900

2 Bedroom, 1.00 Bathroom, 924 sqft

Condo / Townhouse on 0.00 Acres

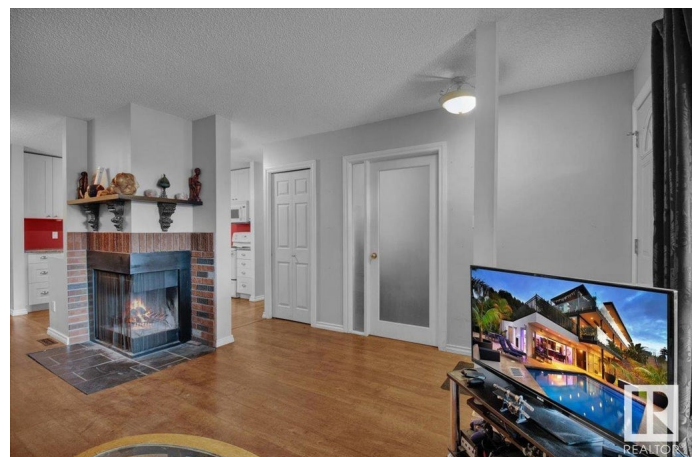
Skyrattler, Edmonton, AB

Welcome to Hunters run off Saddleback road where you will find this charming carriage-style ground floor unit located in the highly sought-after community of Skyrattler. Offering a bright, open layout with a cozy corner fireplace, this well-kept home features an upgraded kitchen with modern cabinets and countertops, a large pantry, two convenient storage areas, and in-suite laundry. The newly renovated bathroom includes updated flooring and a stylish tile tub surround. Recent updates throughout the home include new flooring, furnace, & shingles. Enjoy unbeatable surroundings with Whitemud Creek Ravine on one side and a large green space and the Skyrattler playground on the other, it's the perfect balance of nature and convenience. Ideal for first-time buyers, students, or investors.

Built in 1978

Essential Information

MLS® #	E4438208
Price	\$159,900
Bedrooms	2
Bathrooms	1.00
Full Baths	1
Square Footage	924
Acres	0.00



Year Built	1978
Type	Condo / Townhouse
Sub-Type	Carriage
Style	Single Level Apartment
Status	Active

Community Information

Address	1152 Saddleback Road
Area	Edmonton
Subdivision	Skyrattler
City	Edmonton
County	ALBERTA
Province	AB
Postal Code	T6J 4Z4

Amenities

Amenities	Front Porch, No Animal Home, No Smoking Home, Parking-Visitor, Storage-In-Suite
Parking Spaces	1
Parking	Stall

Interior

Appliances	Dishwasher-Built-In, Dryer, Microwave Hood Fan, Refrigerator, Stove-Electric, Washer
Heating	Forced Air-1, Natural Gas
Fireplace	Yes
Fireplaces	Corner
# of Stories	2
Stories	1
Has Basement	Yes
Basement	None, No Basement

Exterior

Exterior	Wood, Vinyl
Exterior Features	Fruit Trees/Shrubs, Landscaped, Park/Reserve, Playground Nearby, Schools, Shopping Nearby
Roof	Asphalt Shingles
Construction	Wood, Vinyl
Foundation	Concrete Perimeter

Additional Information

Date Listed	May 23rd, 2025
Days on Market	2
Zoning	Zone 16
Condo Fee	\$348

DATA IS DEEMED RELIABLE BUT IS NOT GUARANTEED ACCURATE BY THE REALTORS® ASSOCIATION OF EDMONTON. COPYRIGHT 2025 BY THE REALTORS® ASSOCIATION OF EDMONTON. ALL RIGHTS RESERVED.Trademarks are owned or controlled by the Canadian Real Estate Association (CREA) and identify real estate professionals who are members of CREA (REALTOR®, REALTORS®) and/or the quality of services they provide (MLS®, Multiple Listing Service®)

Listing information last updated on May 25th, 2025 at 1:32pm MDT