

## \$400,000 - 408 Hudson Court, Edmonton

MLS® #E4438042

**\$400,000**

3 Bedroom, 1.50 Bathroom, 1,193 sqft

Single Family on 0.00 Acres

Hudson, Edmonton, AB

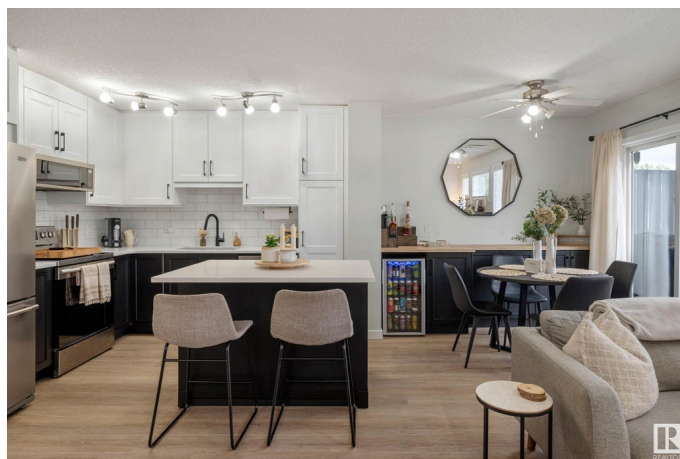
Welcome to this beautifully updated, turnkey 2-storey home, offering 1,192 sq/ft of comfortable and functional living space in a mature, family-friendly neighbourhood. Featuring 3 spacious bedrooms, 1 full bathroom, and a convenient half bathroom, this home is the perfect fit for first-time buyers, growing families, or anyone seeking a move-in-ready property in a prime location. Step inside and fall in love with the thoughtfully renovated main floor, showcasing a modern kitchen with two-tone cabinetry that extends to the ceiling, quartz countertops, and newer stainless steel appliances. The cabinetry and counter space extend into the dining area, providing extra storage and a dedicated spot for beverages or entertaining essentials. The updated half bathroom, newer vinyl flooring on the main floor, and newer carpeting upstairs all contribute to the home's fresh, contemporary feel. Conveniently located near shopping centres, schools, and everyday amenities, this home offers easy access to everything.

Built in 2003

### Essential Information

MLS® # E4438042

Price \$400,000



Bedrooms	3
Bathrooms	1.50
Full Baths	1
Half Baths	1
Square Footage	1,193
Acres	0.00
Year Built	2003
Type	Single Family
Sub-Type	Half Duplex
Style	2 Storey
Status	Active

### Community Information

Address	408 Hudson Court
Area	Edmonton
Subdivision	Hudson
City	Edmonton
County	ALBERTA
Province	AB
Postal Code	T6V 1S7

### Amenities

Amenities	On Street Parking, Deck, Detectors Smoke, Exterior Walls- 2"x6", Front Porch, Hot Water Natural Gas, Vinyl Windows
Parking Spaces	2
Parking	Single Garage Attached

### Interior

Appliances	Dishwasher-Built-In, Dryer, Garage Control, Garage Opener, Microwave Hood Fan, Refrigerator, Storage Shed, Stove-Countertop Electric, Washer, Window Coverings, See Remarks
Heating	Forced Air-1, Natural Gas
Fireplace	Yes
Fireplaces	Mantel, Tile Surround
Stories	2
Has Basement	Yes
Basement	Full, Unfinished

### Exterior

Exterior	Wood, Vinyl
Exterior Features	Fenced, Landscaped, Playground Nearby, Public Transportation, Schools, Shopping Nearby
Roof	Asphalt Shingles
Construction	Wood, Vinyl
Foundation	Concrete Perimeter

### **School Information**

Elementary	Hilwie Hamdon School
Middle	Hilwie Hamdon School
High	Ross Sheppard School

### **Additional Information**

Date Listed	May 23rd, 2025
Days on Market	2
Zoning	Zone 27

DATA IS DEEMED RELIABLE BUT IS NOT GUARANTEED ACCURATE BY THE REALTORS® ASSOCIATION OF EDMONTON. COPYRIGHT 2025 BY THE REALTORS® ASSOCIATION OF EDMONTON. ALL RIGHTS RESERVED. Trademarks are owned or controlled by the Canadian Real Estate Association (CREA) and identify real estate professionals who are members of CREA (REALTOR®, REALTORS®) and/or the quality of services they provide (MLS®, Multiple Listing Service®)

Listing information last updated on May 25th, 2025 at 8:02am MDT