

# \$559,000 - 10411 21 Avenue, Edmonton

MLS® #E4437029

**\$559,000**

4 Bedroom, 4.00 Bathroom, 2,121 sqft

Single Family on 0.00 Acres

Keheewin, Edmonton, AB

Welcome to this spacious family home located in the Keheewin community. The main floor showcases a stunning open-to-above living area, a wood-finished kitchen complemented by two dining areas, and a family area that includes an indoor fireplace. This floor also contains an additional room and a full bathroom as well. Upstairs, you can enjoy the two bedrooms and a full bathroom, plus an ensuite, which includes a jacuzzi. The finished walk-out basement features a second kitchen, a full bathroom, 2 additional rooms, and a large living area. Furthermore, there is a large deck area followed by the backyard, which includes a fire pit, outdoor hot tub connection, and a shed for storage. The front yard includes a driveway connecting to the double-attached heated garage (2023) and a porch area. Along with the recently completed vinyl flooring (2024), the house also offers new washers and dryers for the main floor and basement, two new furnaces (2021), & a new water tank (2020). (id:31684)

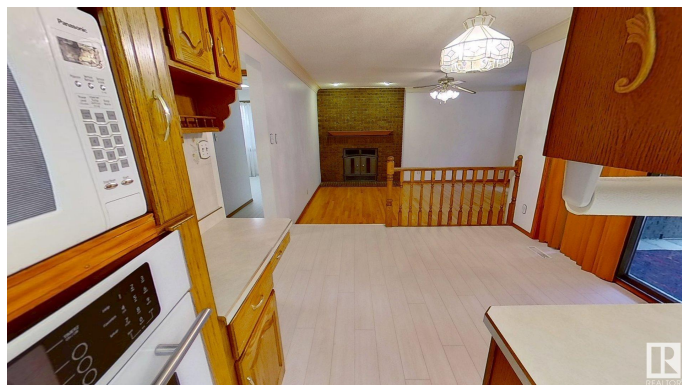
Built in 1983

## Essential Information

MLS® # E4437029

Price \$559,000

Bedrooms 4



Bathrooms	4.00
Full Baths	4
Square Footage	2,121
Acres	0.00
Year Built	1983
Type	Single Family
Sub-Type	Detached Single Family
Style	2 Storey
Status	Active

### Community Information

Address	10411 21 Avenue
Area	Edmonton
Subdivision	Keheewin
City	Edmonton
County	ALBERTA
Province	AB
Postal Code	T6J 5E9

### Amenities

Amenities	Carbon Monoxide Detectors, Ceiling 10 ft., Closet Organizers, Deck, Detectors Smoke, Fire Pit, Hot Water Natural Gas, Security Door, Television Connection, Walkout Basement, Wood Windows
Parking	Double Garage Attached

### Interior

Interior Features	ensuite bathroom
Appliances	Alarm/Security System, Dishwasher-Built-In, Dryer, Garage Opener, Hood Fan, Humidifier-Power(Furnace), Oven-Built-In, Oven-Microwave, Refrigerator, Satellite TV Dish, Storage Shed, Stove-Countertop Electric, Stove-Electric, Vacuum Systems, Washer
Heating	Forced Air-1, Natural Gas
Fireplace	Yes
Fireplaces	Glass Door, Stone Facing, Woodstove
Stories	3
Has Basement	Yes
Basement	Full, Finished

### Exterior

Exterior	Concrete, Brick, Vinyl
----------	------------------------

Exterior Features	Fenced, Fruit Trees/Shrubs, Public Transportation, Schools, Shopping Nearby
Roof	Asphalt Shingles
Construction	Concrete, Brick, Vinyl
Foundation	Concrete Perimeter

**Additional Information**

Date Listed	May 16th, 2025
Days on Market	60
Zoning	Zone 16

DATA IS DEEMED RELIABLE BUT IS NOT GUARANTEED ACCURATE BY THE REALTORS® ASSOCIATION OF EDMONTON. COPYRIGHT 2025 BY THE REALTORS® ASSOCIATION OF EDMONTON. ALL RIGHTS RESERVED.Trademarks are owned or controlled by the Canadian Real Estate Association (CREA) and identify real estate professionals who are members of CREA (REALTOR®, REALTORS®) and/or the quality of services they provide (MLS®, Multiple Listing Service®)

Listing information last updated on July 14th, 2025 at 9:47pm MDT