

## \$145,000 - 201 10524 29 Avenue, Edmonton

MLS® #E4436967

**\$145,000**

2 Bedroom, 1.00 Bathroom, 1,039 sqft

Condo / Townhouse on 0.00 Acres

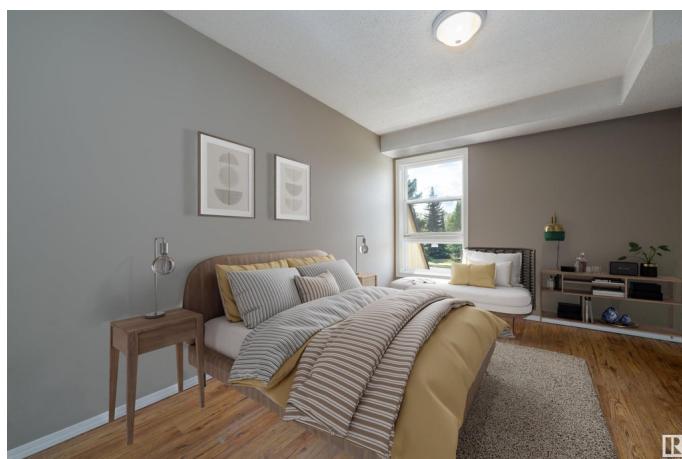
Ermineskin, Edmonton, AB

Bright, spacious, and steps from the LRT—this 2-bedroom condo offers over 1,000 sq. ft. of comfort and convenience. Enjoy stunning south-facing views of parkland, a freshly painted interior, and a layout that includes a large foyer, formal dining area, and cozy living room. The sunlit balcony, generous storage space, and big windows throughout create a warm, inviting atmosphere. All of this just 10 minutes to the University of Alberta and 15 minutes to downtown, with shopping, transit, parks, and the YMCA all nearby. A must-see!

Built in 1978

### Essential Information

MLS® #	E4436967
Price	\$145,000
Bedrooms	2
Bathrooms	1.00
Full Baths	1
Square Footage	1,039
Acres	0.00
Year Built	1978
Type	Condo / Townhouse
Sub-Type	Lowrise Apartment
Style	Multi Level Apartment
Status	Active



## Community Information

Address	201 10524 29 Avenue
Area	Edmonton
Subdivision	Ermineskin
City	Edmonton
County	ALBERTA
Province	AB
Postal Code	T6J 4J2

## Amenities

Amenities	No Smoking Home, Storage-In-Suite
Parking	Stall

## Interior

Appliances	Dishwasher-Built-In, Hood Fan, Refrigerator, Stove-Electric
Heating	Forced Air-1, Natural Gas
# of Stories	3
Stories	3
Has Basement	Yes
Basement	None, No Basement

## Exterior

Exterior	Wood, Brick
Exterior Features	Park/Reserve, Schools, Shopping Nearby
Roof	Asphalt Shingles
Construction	Wood, Brick
Foundation	Concrete Perimeter

## Additional Information

Date Listed	May 16th, 2025
Days on Market	17
Zoning	Zone 16
Condo Fee	\$501

DATA IS DEEMED RELIABLE BUT IS NOT GUARANTEED ACCURATE BY THE REALTORS® ASSOCIATION OF EDMONTON. COPYRIGHT 2025 BY THE REALTORS® ASSOCIATION OF EDMONTON. ALL RIGHTS RESERVED. Trademarks are owned or controlled by the Canadian Real Estate Association (CREA) and identify real estate professionals who are members of CREA (REALTOR®, REALTORS®) and/or the quality of services they provide (MLS®, Multiple Listing Service®)

Listing information last updated on June 2nd, 2025 at 6:02am MDT