

\$470,000 - 15 Eton Link, Spruce Grove

MLS® #E4434540

\$470,000

3 Bedroom, 2.50 Bathroom, 1,708 sqft
Single Family on 0.00 Acres

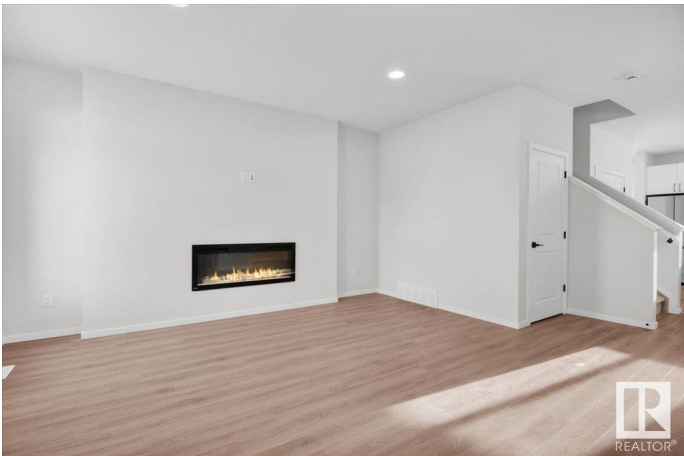
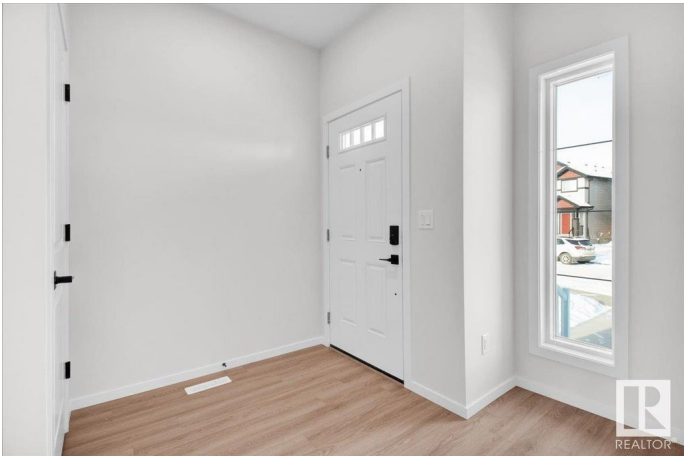
Easton, Spruce Grove, AB

This beautiful 2-storey home in Spruce Grove offers a bright, open-concept main floor with vinyl plank flooring and triple pane vinyl windows throughout. The living room provides a cozy electric fireplace. The spacious kitchen comes equipped with all appliances, and a convenient 2-pc bath is tucked nearby. At the back door, there is a functional mudroom with a bench and cubbies. Upstairs, you'll find a versatile bonus room, 2 bedrooms, a 4-pc bath, and a laundry area. The primary bedroom features a 5-pc ensuite with dual sinks and a large walk-in closet. Enjoy the convenience of a separate side entrance to the basement. Where comfort meets convenience - this newly built home has it all!
Photos are representative

Built in 2025

Essential Information

MLS® #	E4434540
Price	\$470,000
Bedrooms	3
Bathrooms	2.50
Full Baths	2
Half Baths	1
Square Footage	1,708
Acres	0.00



Year Built	2025
Type	Single Family
Sub-Type	Detached Single Family
Style	2 Storey
Status	Active

Community Information

Address	15 Eton Link
Area	Spruce Grove
Subdivision	Easton
City	Spruce Grove
County	ALBERTA
Province	AB
Postal Code	T7X 4B7

Amenities

Amenities	Ceiling 9 ft., Detectors Smoke, No Animal Home, No Smoking Home, Vinyl Windows
Parking	Parking Pad Cement/Paved

Interior

Interior Features	ensuite bathroom
Appliances	Dishwasher-Built-In, Microwave Hood Fan, Refrigerator, Stove-Electric
Heating	Forced Air-1, Natural Gas
Fireplace	Yes
Fireplaces	Insert
Stories	2
Has Basement	Yes
Basement	Full, Unfinished

Exterior

Exterior	Wood, Vinyl
Exterior Features	Park/Reserve, Playground Nearby, Schools, Shopping Nearby
Roof	Asphalt Shingles
Construction	Wood, Vinyl
Foundation	Concrete Perimeter

Additional Information

Date Listed	May 5th, 2025
-------------	---------------

Days on Market 31

Zoning Zone 91

DATA IS DEEMED RELIABLE BUT IS NOT GUARANTEED ACCURATE BY THE REALTORS® ASSOCIATION OF EDMONTON. COPYRIGHT 2025 BY THE REALTORS® ASSOCIATION OF EDMONTON. ALL RIGHTS RESERVED. Trademarks are owned or controlled by the Canadian Real Estate Association (CREA) and identify real estate professionals who are members of CREA (REALTOR®, REALTORS®) and/or the quality of services they provide (MLS®, Multiple Listing Service®)

Listing information last updated on June 4th, 2025 at 10:47pm MDT