

# \$225,000 - 211 10121 80 Avenue, Edmonton

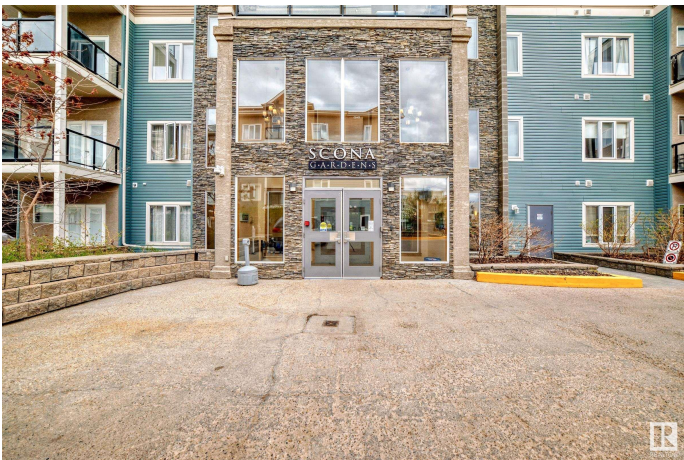
MLS® #E4433923

## \$225,000

1 Bedroom, 1.00 Bathroom, 748 sqft  
Condo / Townhouse on 0.00 Acres

Ritchie, Edmonton, AB

Ritchie is where the life in Edmonton happens! Whether you are a professional working downtown, a university student, an investor or just want to live off Whyte ave and enjoy a quiet home at the same time--this place is perfect. Enter a large open-concept kitchen and living room space with a balcony overlooking a serene street laned with trees. There's a spacious bedroom with a walk-in closet and a large den perfect for a hobby room or an office--this condo has it all! The building is well-designed and boasts heated secure underground parking with a good size storage room, onsite car wash bay, a gym, a bike room, underground guest parking, and a workshop room. Live close to schools, restaurants, bars, and night life in Edmonton!



Built in 2006

### Essential Information

MLS® #	E4433923
Price	\$225,000
Bedrooms	1
Bathrooms	1.00
Full Baths	1
Square Footage	748
Acres	0.00
Year Built	2006

Type	Condo / Townhouse
Sub-Type	Lowrise Apartment
Style	Single Level Apartment
Status	Active

### Community Information

Address	211 10121 80 Avenue
Area	Edmonton
Subdivision	Ritchie
City	Edmonton
County	ALBERTA
Province	AB
Postal Code	T6E 0B9

### Amenities

Amenities	On Street Parking, Air Conditioner, Car Wash, Ceiling 9 ft., Detectors Smoke, Exercise Room, Parking-Visitor, Secured Parking, Security Door, Social Rooms, Storage-Locker Room, Workshop
Parking Spaces	1
Parking	Heated, Insulated, Underground

### Interior

Appliances	Air Conditioning-Central, Dishwasher-Built-In, Dryer, Garage Control, Microwave Hood Fan, Refrigerator, Stove-Electric, Washer
Heating	Fan Coil, Natural Gas
# of Stories	4
Stories	1
Has Basement	Yes
Basement	None, No Basement

### Exterior

Exterior	Wood, Stone, Vinyl
Exterior Features	Landscaped, Playground Nearby, Public Transportation, Schools, Shopping Nearby, View City
Roof	Asphalt Shingles
Construction	Wood, Stone, Vinyl
Foundation	Concrete Perimeter

### Additional Information

Date Listed	May 1st, 2025
-------------	---------------

Days on Market	27
Zoning	Zone 17
Condo Fee	\$491

DATA IS DEEMED RELIABLE BUT IS NOT GUARANTEED ACCURATE BY THE REALTORS® ASSOCIATION OF EDMONTON. COPYRIGHT 2025 BY THE REALTORS® ASSOCIATION OF EDMONTON. ALL RIGHTS RESERVED. Trademarks are owned or controlled by the Canadian Real Estate Association (CREA) and identify real estate professionals who are members of CREA (REALTOR®, REALTORS®) and/or the quality of services they provide (MLS®, Multiple Listing Service®)

Listing information last updated on May 28th, 2025 at 6:47pm MDT