

## \$425,000 - 12 Peacock Drive, Sherwood Park

MLS® #E4432853

**\$425,000**

5 Bedroom, 2.50 Bathroom, 1,019 sqft

Single Family on 0.00 Acres

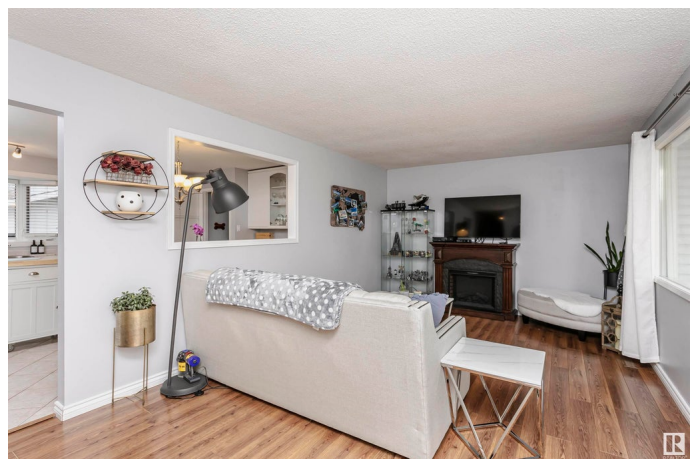
Brentwood (Sherwood Park), Sherwood Park, AB

Welcome to this charming bungalow located in the highly sought-after community of Brentwood! This beautifully maintained home offers 3 generously sized bedrooms on the main floor and a fully finished basement with 2 additional bedrooms and another full bathroom—perfect for extended family or guests. The home also features an oversized double detached garage with an additional storage room, providing plenty of space for your needs. Nestled on a spacious lot, the property includes an oversized parking pad ideal for extra vehicles or RV parking. Recent updates such as a newer hot water tank and roof offer added peace of mind. Ideally situated directly in front of Peacock Park and close to great schools, this home combines comfort, space, and an unbeatable location. Don't miss your chance to own this Brentwood gem!

Built in 1968

### Essential Information

MLS® #	E4432853
Price	\$425,000
Bedrooms	5
Bathrooms	2.50
Full Baths	2



Half Baths	1
Square Footage	1,019
Acres	0.00
Year Built	1968
Type	Single Family
Sub-Type	Detached Single Family
Style	Bungalow
Status	Active

### Community Information

Address	12 Peacock Drive
Area	Sherwood Park
Subdivision	Brentwood (Sherwood Park)
City	Sherwood Park
County	ALBERTA
Province	AB
Postal Code	T8A 0A8

### Amenities

Amenities	On Street Parking, Deck, Hot Tub
Parking Spaces	2
Parking	Double Garage Detached

### Interior

Interior Features	ensuite bathroom
Appliances	Dishwasher-Built-In, Dryer, Freezer, Hood Fan, Refrigerator, Washer, Garage Heater, Hot Tub
Heating	Forced Air-1, Natural Gas
Stories	2
Has Basement	Yes
Basement	Full, Finished

### Exterior

Exterior	Wood, Vinyl
Exterior Features	Fenced, Landscaped, Playground Nearby
Roof	Asphalt Shingles
Construction	Wood, Vinyl
Foundation	Concrete Perimeter

### Additional Information

Date Listed April 25th, 2025

Days on Market 1

Zoning Zone 25

DATA IS DEEMED RELIABLE BUT IS NOT GUARANTEED ACCURATE BY THE REALTORS® ASSOCIATION OF EDMONTON. COPYRIGHT 2025 BY THE REALTORS® ASSOCIATION OF EDMONTON. ALL RIGHTS RESERVED. Trademarks are owned or controlled by the Canadian Real Estate Association (CREA) and identify real estate professionals who are members of CREA (REALTOR®, REALTORS®) and/or the quality of services they provide (MLS®, Multiple Listing Service®)

Listing information last updated on April 26th, 2025 at 4:47pm MDT