

\$225,400 - 56215 Rr 211, Rural Strathcona County

MLS® #E4432177

\$225,400

0 Bedroom, 0.00 Bathroom,
Land Commercial on 0.00 Acres

None, Rural Strathcona County, AB

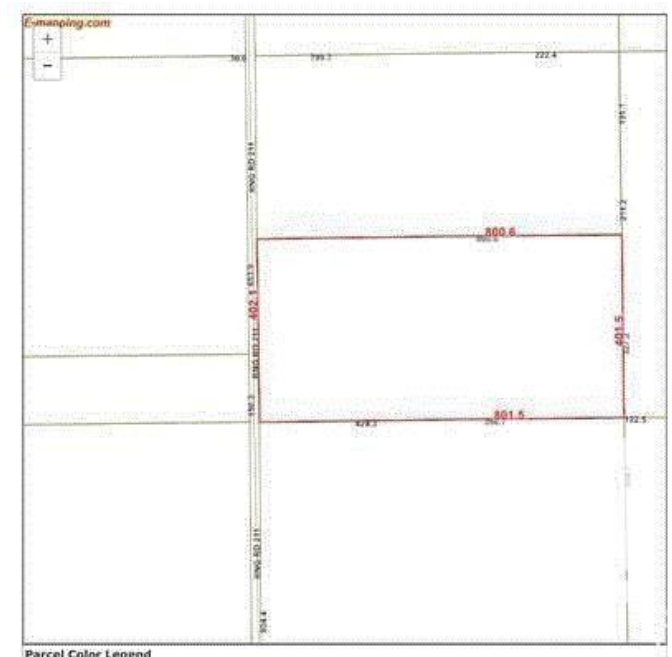
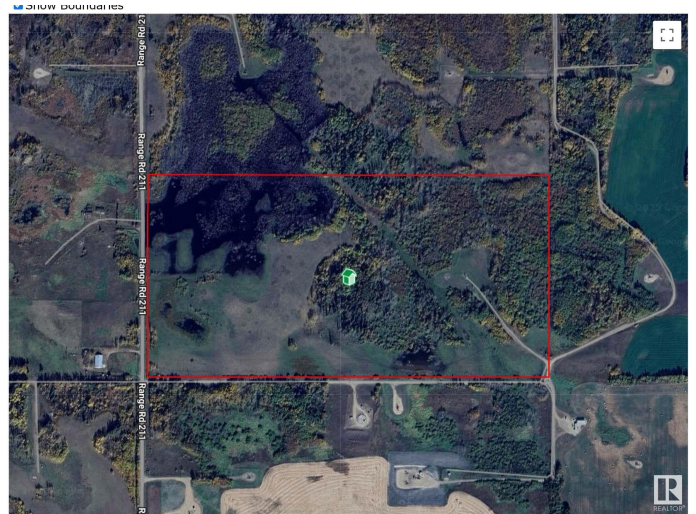
"HUNTERS ALERT" Amazing piece of land great for the outdoorsman who likes hunting. Many great treed and open areas, rolling land with wetland throughout. Located just minutes from Fort Saskatchewan. Ideal for recreational use or grazing pasture land too. The 80-acre property directly to the north is also for sale, presenting a larger investment opportunity. Conveniently close to Fort Saskatchewan, Sherwood Park, Edmonton, and Redwater. A solid short- or long-term holding property with multiple potential uses. The land generates \$6,150 annually from 2 long-term tenants. Please note that you cannot build a permanent house on this land because of the zoning.

Essential Information

MLS® #	E4432177
Price	\$225,400
Bathrooms	0.00
Acres	0.00
Type	Land Commercial
Status	Active

Community Information

Address	56215 Rr 211
Area	Rural Strathcona County
Subdivision	None



City	Rural Strathcona County
County	ALBERTA
Province	AB
Postal Code	T8A 0Z7

Additional Information

Date Listed	April 23rd, 2025
Days on Market	105
Zoning	Zone 60

DATA IS DEEMED RELIABLE BUT IS NOT GUARANTEED ACCURATE BY THE REALTORS® ASSOCIATION OF EDMONTON. COPYRIGHT 2025 BY THE REALTORS® ASSOCIATION OF EDMONTON. ALL RIGHTS RESERVED. Trademarks are owned or controlled by the Canadian Real Estate Association (CREA) and identify real estate professionals who are members of CREA (REALTOR®, REALTORS®) and/or the quality of services they provide (MLS®, Multiple Listing Service®)

Listing information last updated on August 6th, 2025 at 8:17am MDT