

## **\$172,500 - 2 10520 80 Avenue, Edmonton**

---

MLS® #E4431174

### **\$172,500**

1 Bedroom, 1.00 Bathroom, 710 sqft  
Condo / Townhouse on 0.00 Acres

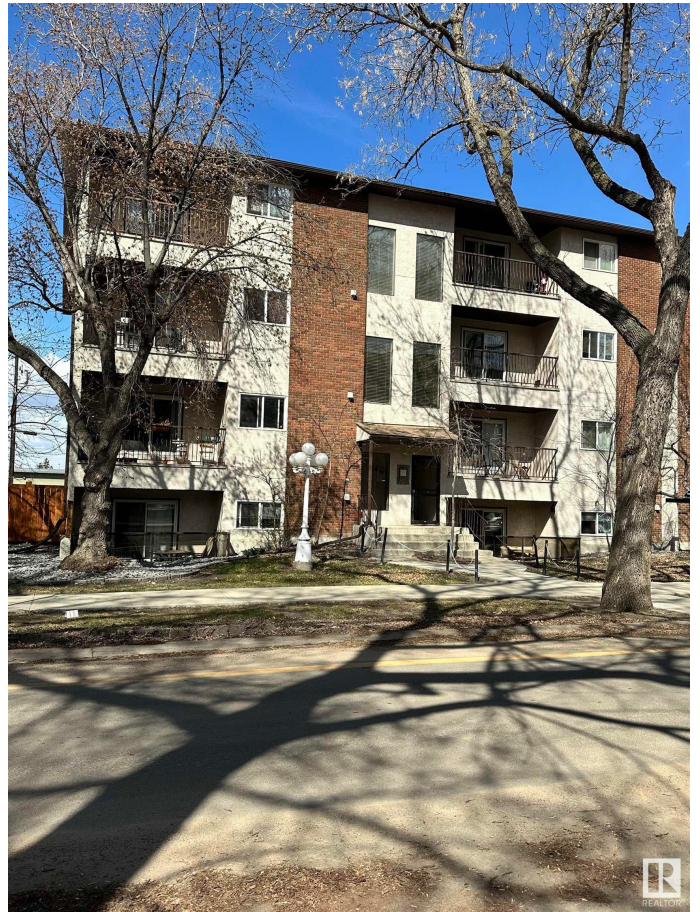
Queen Alexandra, Edmonton, AB

Check out this stylish 710 sq ft one-bedroom condo near Whyte Ave. Perfect for a young couple, university student, or savvy professional, this charming one-bedroom, one-bath unit offers comfort and convenience in one of Edmonton's most vibrant neighborhoods. Just a few blocks from the iconic Whyte Avenue, you'll enjoy a cozy living space complete with a private south facing shaded patio—ideal for relaxing summer evenings. The spacious bedroom includes ample closet space, while in-suite laundry and extra storage add everyday ease and practicality. Live close to all the action—shops, restaurants, the Fringe & other happening events, the University of Alberta, and public transit are all within easy reach.

Built in 1981

### **Essential Information**

MLS® #	E4431174
Price	\$172,500
Bedrooms	1
Bathrooms	1.00
Full Baths	1
Square Footage	710
Acres	0.00
Year Built	1981



Type Condo / Townhouse  
Sub-Type Lowrise Apartment  
Style Single Level Apartment  
Status Active

### Community Information

Address 2 10520 80 Avenue  
Area Edmonton  
Subdivision Queen Alexandra  
City Edmonton  
County ALBERTA  
Province AB  
Postal Code T6E 1V3

### Amenities

Amenities On Street Parking, Detecto  
Parking-Plug-Ins, Patio, Secu  
Parking Stall

### Interior

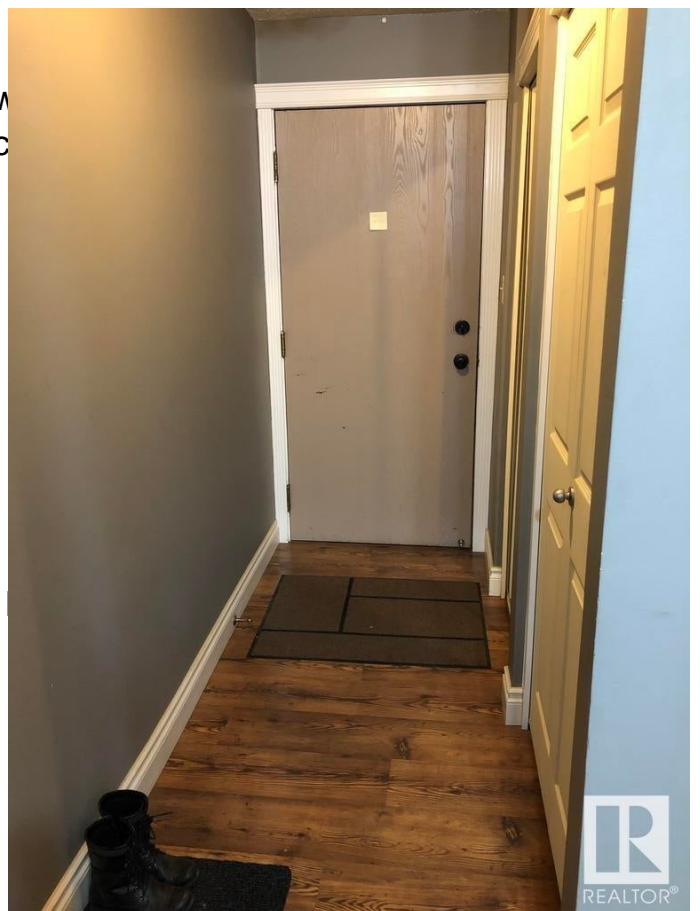
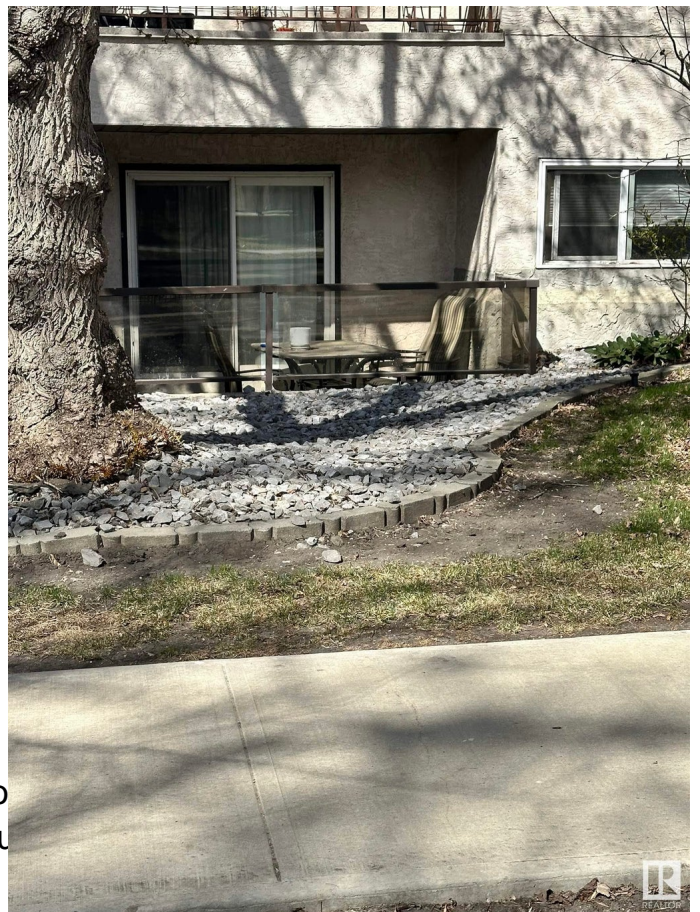
Appliances Dishwasher-Built-In, Microw  
Washer/Dryer, Stove-Electric  
Heating Hot Water, Natural Gas  
# of Stories 4  
Stories 4  
Has Basement Yes  
Basement None, No Basement

### Exterior

Exterior Wood, Stucco  
Exterior Features Back Lane, Paved Lane,  
Nearby, Treed Lot  
Roof Asphalt Shingles  
Construction Wood, Stucco  
Foundation Concrete Perimeter

### Additional Information

Date Listed April 16th, 2025  
Days on Market 7  
Zoning Zone 15



Condo Fee

\$386

DATA IS DEEMED RELIABLE BUT IS NOT GUARANTEED ACCURATE BY THE REALTORS® ASSOCIATION OF EDMONTON. COPYRIGHT 2025 BY THE REALTORS® ASSOCIATION OF EDMONTON. ALL RIGHTS RESERVED. Trademarks are owned or controlled by the Canadian Real Estate Association (CREA) and identify real estate professionals who are members of CREA (REALTOR®, REALTORS®) and/or the quality of services they provide (MLS®, Multiple Listing Service®)

Listing information last updated on April 23rd, 2025 at 12:47am MDT