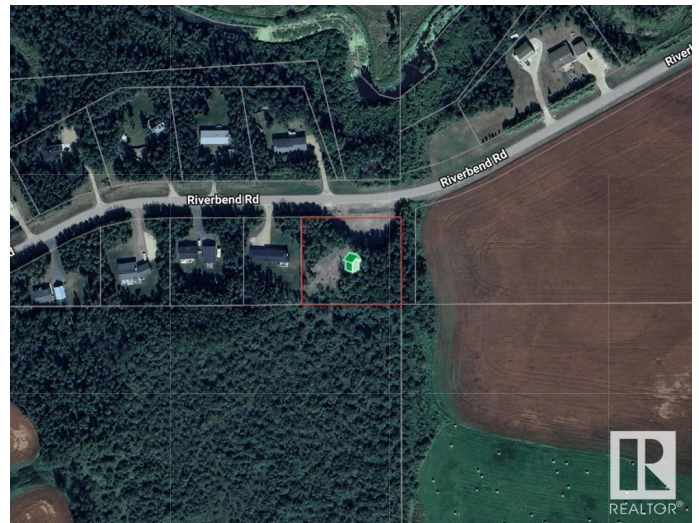


**\$234,500**

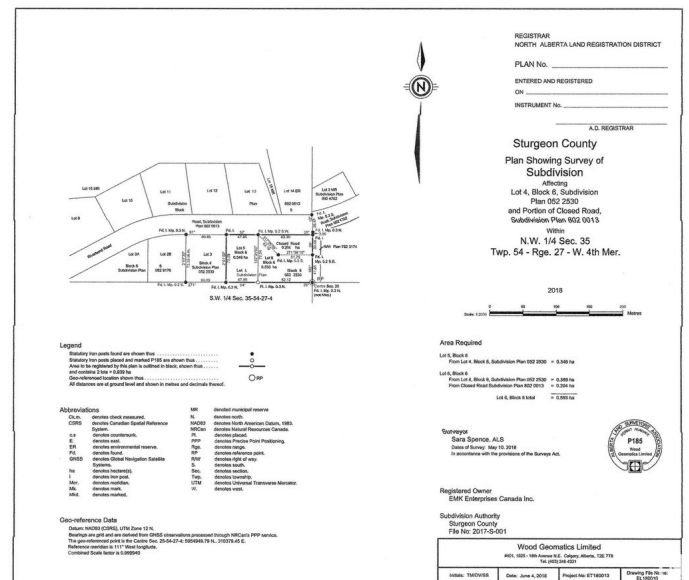
Shil Shol Estate, Rural Sturgeon County, AB

Build your country home on a private treed 1.47 acre lot with a south facing back yard. Only one neighbor to the west, a farmers field to the east and treed land to the south. Located just south of Highway 37 off Range Rd 271 and approximately 20 minutes from St. Albert and Spruce Grove.



## Essential Information

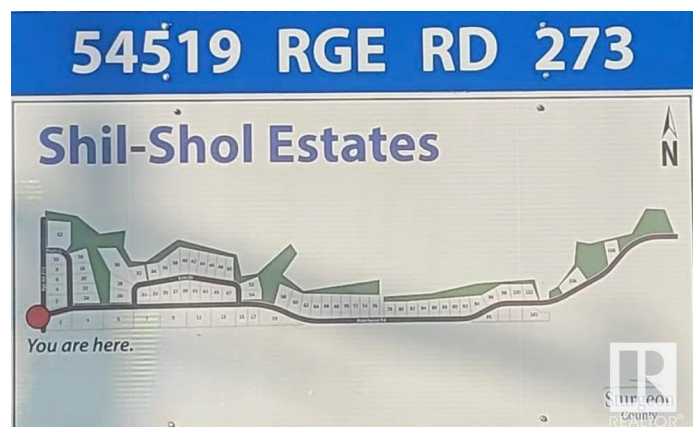
MLS® #	E4429365
Price	\$234,500
Bathrooms	0.00
Acres	1.47
Type	Rural
Sub-Type	Vacant Lot/Land
Status	Active



## Community Information

Address	103 Riverbend Road
Area	Rural Sturgeon County
Subdivision	Shil Shol Estate
City	Rural Sturgeon County
County	ALBERTA
Province	AB
Postal Code	T0G 0J0

## Exterior



Exterior Features   Flat Site, Treed Lot, See Remarks

**Additional Information**

Date Listed                April 4th, 2025

Days on Market        45

Zoning                    Zone 70

DATA IS DEEMED RELIABLE BUT IS NOT GUARANTEED ACCURATE BY THE REALTORS® ASSOCIATION OF EDMONTON. COPYRIGHT 2025 BY THE REALTORS® ASSOCIATION OF EDMONTON. ALL RIGHTS RESERVED.Trademarks are owned or controlled by the Canadian Real Estate Association (CREA) and identify real estate professionals who are members of CREA (REALTOR®, REALTORS®) and/or the quality of services they provide (MLS®, Multiple Listing Service®)

Listing information last updated on May 18th, 2025 at 10:17pm MDT