

## \$279,990 - 7d Twin Terrace, Edmonton

MLS® #E4429338

**\$279,990**

3 Bedroom, 1.50 Bathroom, 1,076 sqft

Condo / Townhouse on 0.00 Acres

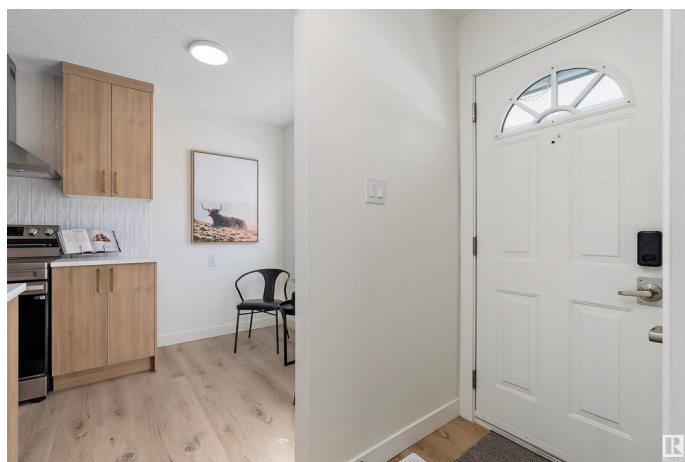
Tweddle Place, Edmonton, AB

Fully renovated corner-unit townhouse in Twin Terrace! This 1075 sq/ft home offers 3 bedrooms, 2 bathrooms, and is perfect for a growing family. The bright kitchen features all-new finishes and appliances, plus a dining area and cozy breakfast nook to enjoy the morning sun. The spacious main floor includes a large living area with both front and back doors opening to your fenced yard—perfect for kids and pets. Upstairs you'll find 3 generous bedrooms with ample closet space and a beautifully updated full bath. The basement is framed and ready for a 4th bedroom, office, or storage space. High-efficiency furnace, newer water heater, and a brand new laundry pair make this home move-in ready!

Built in 1975

### Essential Information

MLS® #	E4429338
Price	\$279,990
Bedrooms	3
Bathrooms	1.50
Full Baths	1
Half Baths	1
Square Footage	1,076
Acres	0.00



Year Built	1975
Type	Condo / Townhouse
Sub-Type	Townhouse
Style	2 Storey
Status	Active

### Community Information

Address	7d Twin Terrace
Area	Edmonton
Subdivision	Tweddle Place
City	Edmonton
County	ALBERTA
Province	AB
Postal Code	T6K 1V4

### Amenities

Amenities	Hot Water Natural Gas, No Animal Home, No Smoking Home, Parking-Visitor
Parking	Stall

### Interior

Appliances	Dishwasher-Built-In, Dryer, Refrigerator, Stove-Electric, Washer
Heating	Forced Air-1, Natural Gas
Stories	2
Has Basement	Yes
Basement	Full, Partially Finished

### Exterior

Exterior	Wood, Stucco, Vinyl
Exterior Features	Fenced, Playground Nearby, Public Transportation, Recreation Use, Schools, Shopping Nearby
Roof	Asphalt Shingles
Construction	Wood, Stucco, Vinyl
Foundation	Concrete Perimeter

### Additional Information

Date Listed	April 5th, 2025
Days on Market	15
Zoning	Zone 29

Condo Fee                    \$295

DATA IS DEEMED RELIABLE BUT IS NOT GUARANTEED ACCURATE BY THE REALTORS® ASSOCIATION OF EDMONTON. COPYRIGHT 2025 BY THE REALTORS® ASSOCIATION OF EDMONTON. ALL RIGHTS RESERVED.Trademarks are owned or controlled by the Canadian Real Estate Association (CREA) and identify real estate professionals who are members of CREA (REALTOR®, REALTORS®) and/or the quality of services they provide (MLS®, Multiple Listing Service®)

Listing information last updated on April 20th, 2025 at 2:02pm MDT