

# \$165,000 - 3115 144 Avenue, Edmonton

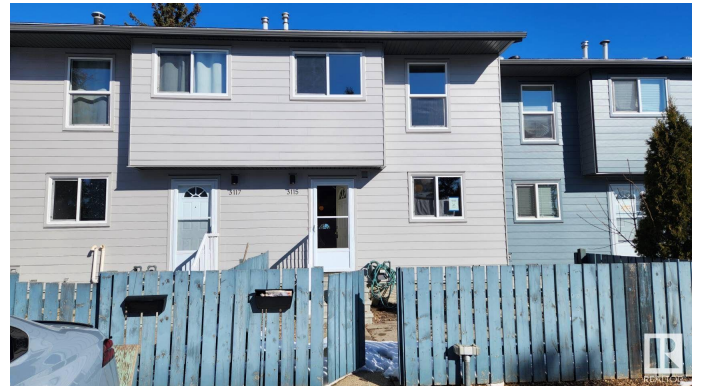
MLS® #E4429274

**\$165,000**

3 Bedroom, 2.50 Bathroom, 1,051 sqft  
Condo / Townhouse on 0.00 Acres

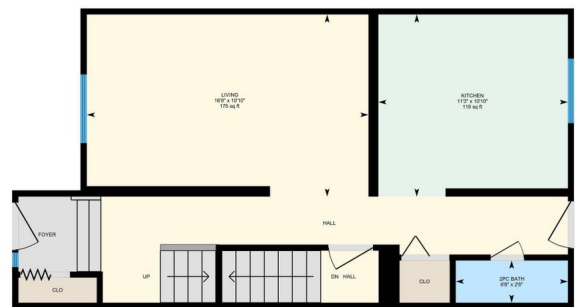
Hairsine, Edmonton, AB

Investor Alert or Perfect First Home! This spacious 3 bed, 2.5 bath townhome offers a functional layout with a partially finished basement featuring a rec room and half bath. Conveniently located next to the Anthony Henday for easy commuting. Clareview LRT Station is close by, and you're just minutes from Costco, Superstore, Walmart, and the Clareview Community Rec Centre. Situated near good schools and the river valley trail system, this location offers both convenience and lifestyle. A great opportunity with cashflow potentialâ€”donâ€™t miss it! Please note the property is sold as is where is at time of possession. No representations or warranties



3115 144 Ave NW, Edmonton, AB

Main Floor Exterior Area 555.01 sq ft



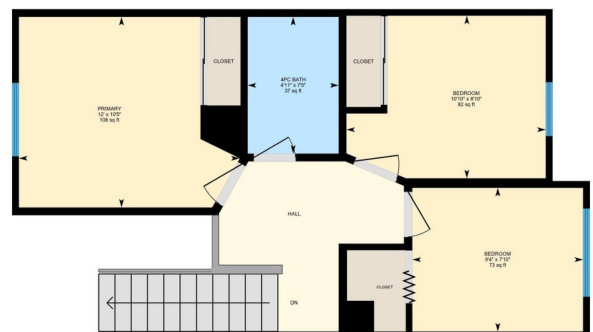
0 3 6 ft

PREPARED: 20250403

White regions are excluded from total floor area in iGUIDE floor plans. All room dimensions and floor areas must be considered approximate and are subject to independent verification.

3115 144 Ave NW, Edmonton, AB

2nd Floor Exterior Area 496.31 sq ft



0 3 6 ft

PREPARED: 20250403

White regions are excluded from total floor area in iGUIDE floor plans. All room dimensions and floor areas must be considered approximate and are subject to independent verification.

Built in 1978

## Essential Information

MLS® #	E4429274
Price	\$165,000
Bedrooms	3
Bathrooms	2.50
Full Baths	2
Half Baths	1
Square Footage	1,051
Acres	0.00
Year Built	1978
Type	Condo / Townhouse

Sub-Type	Townhouse
Style	2 Storey
Status	Active

### **Community Information**

Address	3115 144 Avenue
Area	Edmonton
Subdivision	Hairsine
City	Edmonton
County	ALBERTA
Province	AB
Postal Code	T5Y 1H4

### **Amenities**

Amenities	See Remarks
Parking	Stall

### **Interior**

Appliances	See Remarks
Heating	Forced Air-1, Natural Gas
Stories	3
Has Basement	Yes
Basement	Full, Finished

### **Exterior**

Exterior	Wood
Exterior Features	See Remarks
Roof	Asphalt Shingles
Construction	Wood
Foundation	Concrete Perimeter

### **Additional Information**

Date Listed	April 5th, 2025
Days on Market	12
Zoning	Zone 35
RE / Bank Owned	Yes

DATA IS DEEMED RELIABLE BUT IS NOT GUARANTEED ACCURATE BY THE REALTORS® ASSOCIATION OF EDMONTON. COPYRIGHT 2025 BY THE REALTORS® ASSOCIATION OF EDMONTON. ALL RIGHTS RESERVED. Trademarks are owned or controlled by the Canadian Real Estate Association (CREA) and identify real estate professionals who are members of CREA (REALTOR®, REALTORS®) and/or the quality of services they

provide (MLS® , Multiple Listing Service®)

Listing information last updated on April 17th, 2025 at 7:02am MDT