

# **\$672,000 - 266 54150 Rge Road 224, Rural Strathcona County**

MLS® #E4428765

**\$672,000**

3 Bedroom, 2.00 Bathroom, 1,607 sqft

Rural on 3.42 Acres

Galloway Park, Rural Strathcona County, AB

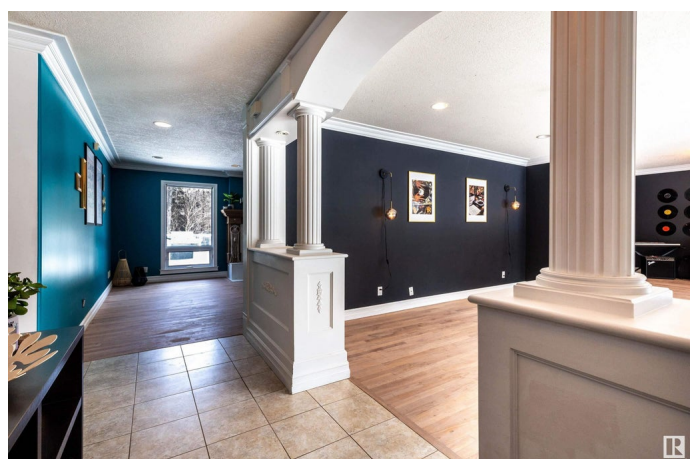
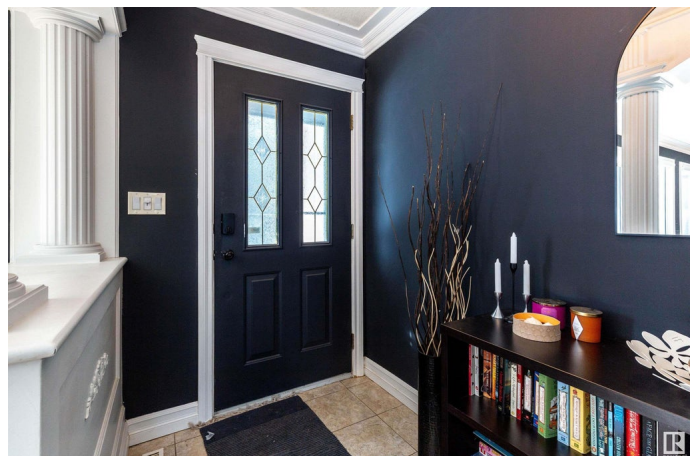
Escape to the tranquility of Galloway Park in this breathtaking country residential home, nestled on 3.46 acres. This stunning property offers the perfect blend of natural beauty, country living, and modern amenities. The property's private setting provides a serene atmosphere, surrounded by lush greenery. The perfect retreat for those seeking a peaceful escape from the hustle and bustle of city life. Flooring is ceramic tile and hardwood floors, enjoy floor-to-ceiling windows all around the main level, allowing for an abundance of natural light. Three spacious bedrooms with a 5 piece bath and a 3 piece en-suite perfect for family members or guests. The modern kitchen is equipped with stainless steel appliances and ample counter space, perfect for culinary enthusiasts. The property's oversized double heated garage provides ample space for vehicle storage and hobbies. The backyard features a private deck with custom glass railings, offering an additional outdoor entertaining space.

Built in 1973

## **Essential Information**

MLS® # E4428765

Price \$672,000



Bedrooms	3
Bathrooms	2.00
Full Baths	2
Square Footage	1,607
Acres	3.42
Year Built	1973
Type	Rural
Sub-Type	Detached Single Family
Style	Bungalow
Status	Active

### Community Information

Address	266 54150 Rge Road 224
Area	Rural Strathcona County
Subdivision	Galloway Park
City	Rural Strathcona County
County	ALBERTA
Province	AB
Postal Code	T8L 3Y5

### Amenities

Features	Deck, Dog Run-Fenced In, Fire Pit, Parking-Extra, R.V. Storage, Storage-In-Suite
Parking Spaces	10

### Interior

Interior Features	ensuite bathroom
Heating	Forced Air-1, Natural Gas
Fireplace	Yes
Stories	1
Has Basement	Yes
Basement	Full, Unfinished

### Exterior

Exterior	Wood
Exterior Features	Backs Onto Park/Trees, Flat Site, Fruit Trees/Shrubs, Golf Nearby, Landscaped, Level Land, Picnic Area, Private Setting, Recreation Use, Treed Lot, Vegetable Garden, Private Park Access
Construction	Wood

Foundation                      Concrete Perimeter

**Additional Information**

Date Listed                      April 3rd, 2025

Days on Market                25

Zoning                            Zone 60

DATA IS DEEMED RELIABLE BUT IS NOT GUARANTEED ACCURATE BY THE REALTORS® ASSOCIATION OF EDMONTON. COPYRIGHT 2025 BY THE REALTORS® ASSOCIATION OF EDMONTON. ALL RIGHTS RESERVED.Trademarks are owned or controlled by the Canadian Real Estate Association (CREA) and identify real estate professionals who are members of CREA (REALTOR®, REALTORS®) and/or the quality of services they provide (MLS®, Multiple Listing Service®)

Listing information last updated on April 28th, 2025 at 12:17am MDT