

# \$999,900 - 49 52245 Rge Road 232, Rural Strathcona County

MLS® #E4425271

**\$999,900**

0 Bedroom, 0.00 Bathroom,  
Rural on 6.84 Acres

Graham Heights, Rural Strathcona County, AB

DREAM LOCATION to build your DREAM HOME!!! This is the lot you've been waiting for 6.84 acres of raw land in the desirable subdivision of Graham Heights just 2 mins from Sherwood Park. Completely PRIVATE and TREED giving peace and tranquility PLUS all the conveniences of being close to town.

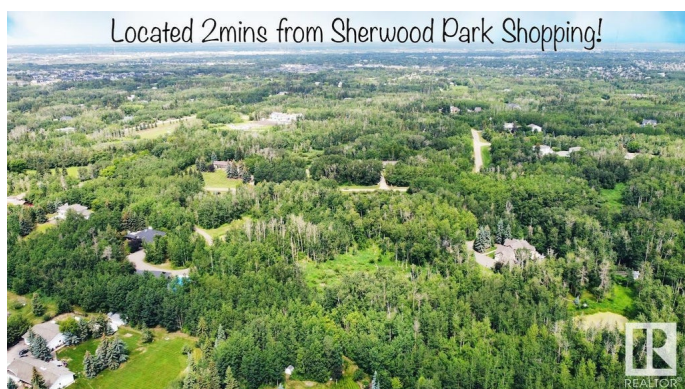
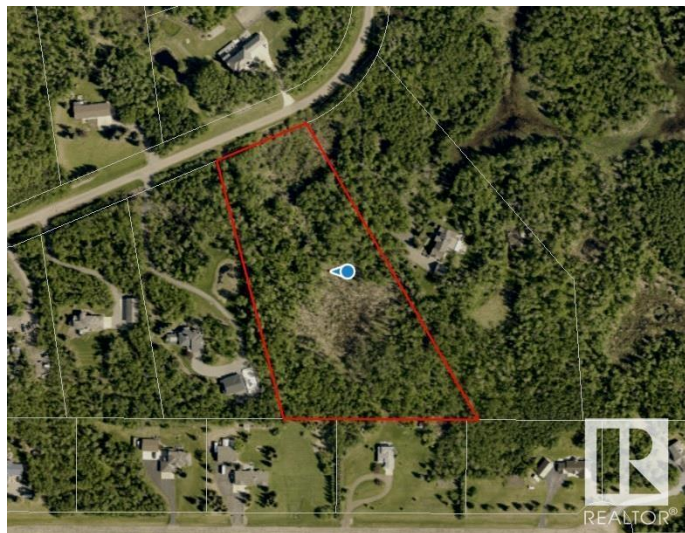
## Essential Information

|           |                 |
|-----------|-----------------|
| MLS® #    | E4425271        |
| Price     | \$999,900       |
| Bathrooms | 0.00            |
| Acres     | 6.84            |
| Type      | Rural           |
| Sub-Type  | Vacant Lot/Land |
| Status    | Active          |

## Community Information

|             |                         |
|-------------|-------------------------|
| Address     | 49 52245 Rge Road 232   |
| Area        | Rural Strathcona County |
| Subdivision | Graham Heights          |
| City        | Rural Strathcona County |
| County      | ALBERTA                 |
| Province    | AB                      |
| Postal Code | T8B 1B6                 |

## Exterior



Exterior Features    Private Setting, Treed Lot, See Remarks

**Additional Information**

Date Listed                March 12th, 2025

Days on Market        47

Zoning                    Zone 80

DATA IS DEEMED RELIABLE BUT IS NOT GUARANTEED ACCURATE BY THE REALTORS® ASSOCIATION OF EDMONTON. COPYRIGHT 2025 BY THE REALTORS® ASSOCIATION OF EDMONTON. ALL RIGHTS RESERVED.Trademarks are owned or controlled by the Canadian Real Estate Association (CREA) and identify real estate professionals who are members of CREA (REALTOR®, REALTORS®) and/or the quality of services they provide (MLS®, Multiple Listing Service®)

Listing information last updated on April 28th, 2025 at 2:32pm MDT