

\$281,000 - 305 320 Ambleside Link, Edmonton

MLS® #E4424535

\$281,000

2 Bedroom, 2.00 Bathroom, 853 sqft
Condo / Townhouse on 0.00 Acres

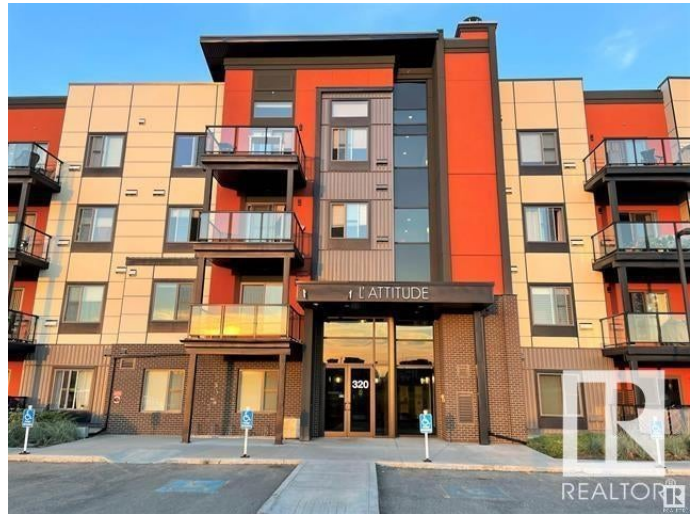
Ambleside, Edmonton, AB

This 2 bedrooms unit located in L'ATTITUDE STUDIOS. The unit is in MINT condition. Feature 9' ceilings throughout the unit. Modern design kitchen looking over the LIVING and DINING room. Nice sized master bedroom comes with walk through closet and 3 piece full bath. Other good sized bedroom and 4 piece full bath also in the unit as well. HE appliances. Complex has FITNESS ROOM, SOCIAL ROOM. Also comes with one underground parking and Storage. Walking distance to SHOPPING, PUBLIC TRANSIT. Close to SCHOOL and EASY ACCESS to ANTHONY HENDAY and WHITEMUD freeway.

Built in 2014

Essential Information

MLS® #	E4424535
Price	\$281,000
Bedrooms	2
Bathrooms	2.00
Full Baths	2
Square Footage	853
Acres	0.00
Year Built	2014
Type	Condo / Townhouse
Sub-Type	Lowrise Apartment



Style Single Level Apartment
Status Active

Community Information

Address 305 320 Ambleside Link
Area Edmonton
Subdivision Ambleside
City Edmonton
County ALBERTA
Province AB
Postal Code T6W 2Z9

Amenities

Amenities Carbon Monoxide Detectors, Ceiling 9 ft., Detectors Smoke, Exercise Room, Intercom, Parking-Visitor, Secured Parking, Social Rooms, Sprinkler System-Fire, Vinyl Windows, Storage Cage
Parking Heated, Underground

Interior

Interior Features ensuite bathroom
Appliances Dishwasher-Built-In, Dryer, Garage Control, Microwave Hood Fan, Refrigerator, Stove-Electric, Washer
Heating Baseboard, Natural Gas
of Stories 4
Stories 1
Has Basement Yes
Basement None, No Basement

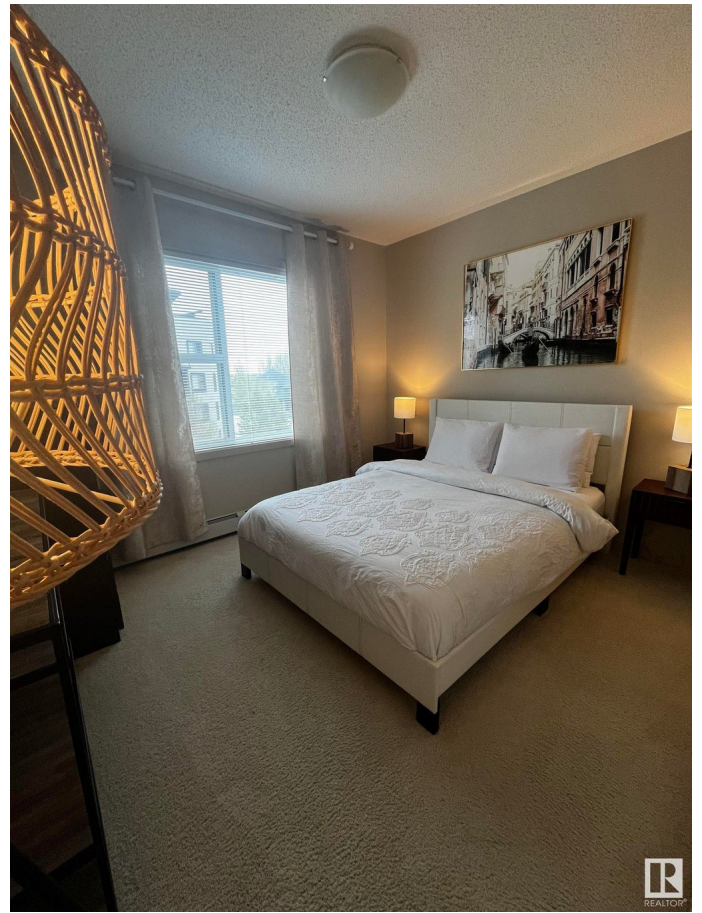
Exterior

Exterior Wood, Brick, Stucco
Exterior Features Cul-De-Sac, Fenced, Golf Nearby, Landscaped, Park/Reserve, Playground Nearby, Public Transportation, Schools, Shopping Nearby
Roof Tar & Gravel
Construction Wood, Brick, Stucco
Foundation Concrete Perimeter

Additional Information

Date Listed March 7th, 2025
Days on Market 7
Zoning Zone 56

HOA Fees	50
HOA Fees Freq.	Annually
Condo Fee	\$466



DATA IS DEEMED RELIABLE BUT IS NOT GUARANTEED ACCURATE BY THE REALTORS® ASSOCIATION OF EDMONTON. COPYRIGHT 2025 BY THE REALTORS® ASSOCIATION OF EDMONTON. ALL RIGHTS RESERVED. Trademarks are owned or controlled by the Canadian Real Estate Association (CREA) and identify real estate professionals who are members of CREA (REALTOR®, REALTORS®) and/or the quality of services they provide (MLS®, Multiple Listing Service®)

Listing information last updated on March 14th, 2025 at 11:47am MDT