

Courtesy Of Michael T Kinsella Of RE/MAX Elite

\$1,057,000 - 1 56221 Rge Rd 242, Rural Sturgeon County

MLS® #E4420347

\$1,057,000

7 Bedroom, 4.00 Bathroom, 3,720 sqft

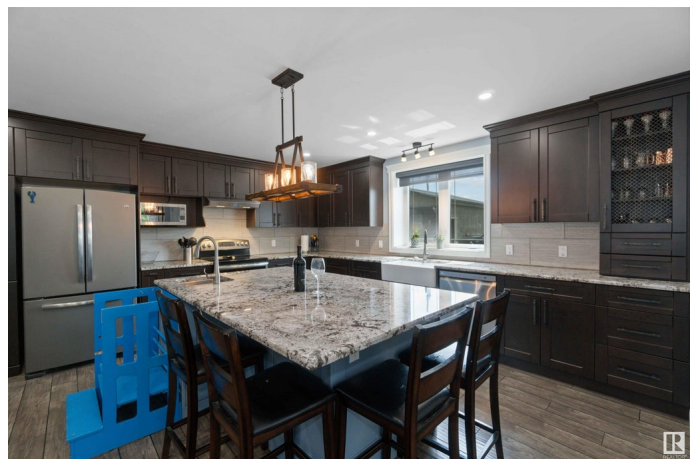
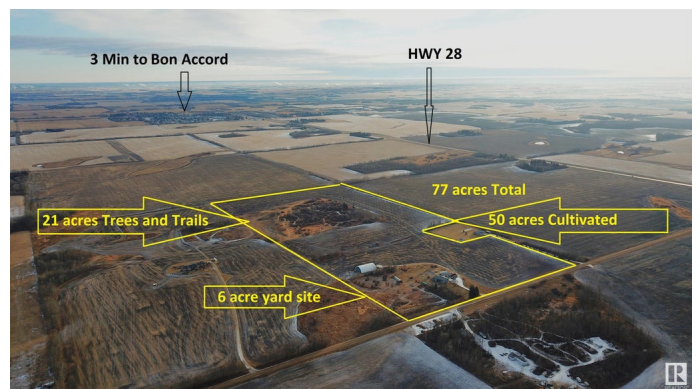
Rural on 77.00 Acres

None, Rural Sturgeon County, AB

THE BEST OF IT ALL!!! 77 Acres just 16 MIN FROM EDMONTON and only 3 Min to Schools in Bon Accord only 1KM OFF THE PAVEMENT. Land covers all aspects with 50 acres for PRODUCING CROPS, 21 acres of TREES AND TRAILS FULL OF WILDLIFE and 6 acre yard site. Home was BUILT TO LAST FOREVER and Ultra Efficient! INSULATED CONCRETE WALLS wrapped in Hardie board siding and topped with a tin roof! DRILLED WELL PRODUCES GREAT water and septic is only a few years old. 6 Bedrooms and 5 bathrooms, plus PRIVATE OFFICE with a fully finished basement. DESIGNER KITCHEN MADE FOR BIG FAMILY LIVING! Farmhouse sink with a view, endless cabinets and drawers, Island with sink and lots of seating plus 2 Walk in pantry's. Home is FILLED WITH NATURAL LIGHT and a view from every window! GARAGE HAS A NEW ROOF with a sea can added to extra storage. 65X100 COLD STORAGE BUILDING will hold all your toys and then some. Garden with Greenhouse, Fruit trees and Shrubs, Hot Tub, Firepit, plus more. MOVE IN READY and Flexible Possession.

Built in 2017

Essential Information



| | |
|----------------|------------------------|
| MLS® # | E4420347 |
| Price | \$1,057,000 |
| Bedrooms | 7 |
| Bathrooms | 4.00 |
| Full Baths | 3 |
| Half Baths | 2 |
| Square Footage | 3,720 |
| Acres | 77.00 |
| Year Built | 2017 |
| Type | Rural |
| Sub-Type | Detached Single Family |
| Style | 2 Storey |
| Status | Active |

Community Information

| | |
|-------------|-----------------------|
| Address | 1 56221 Rge Rd 242 |
| Area | Rural Sturgeon County |
| Subdivision | None |
| City | Rural Sturgeon County |
| County | ALBERTA |
| Province | AB |
| Postal Code | T0A 0K3 |

Amenities

| | |
|----------|-----------------------------------------------------------------------------------|
| Features | Ceiling 9 ft., Deck, Greenhouse, Hot Tub, Vinyl Windows, Workshop, Green Building |
|----------|-----------------------------------------------------------------------------------|

Interior

| | |
|-------------------|---------------------------|
| Interior Features | ensuite bathroom |
| Heating | Forced Air-2, Natural Gas |
| Stories | 3 |
| Has Basement | Yes |
| Basement | Full, Finished |

Exterior

| | |
|-------------------|------------------------------------------------------------------|
| Exterior | ICFs (Insulated Concrete Forms) |
| Exterior Features | Backs Onto Park/Trees, Flat Site, Fruit Trees/Shrubs, Landscaped |
| Construction | ICFs (Insulated Concrete Forms) |
| Foundation | Insulated Concrete Form |

Additional Information

| | |
|----------------|--------------------|
| Date Listed | February 5th, 2025 |
| Days on Market | 161 |
| Zoning | Zone 60 |

DATA IS DEEMED RELIABLE BUT IS NOT GUARANTEED ACCURATE BY THE REALTORS® ASSOCIATION OF EDMONTON. COPYRIGHT 2025 BY THE REALTORS® ASSOCIATION OF EDMONTON. ALL RIGHTS RESERVED.Trademarks are owned or controlled by the Canadian Real Estate Association (CREA) and identify real estate professionals who are members of CREA (REALTOR®, REALTORS®) and/or the quality of services they provide (MLS®, Multiple Listing Service®)

Listing information last updated on July 16th, 2025 at 10:32am MDT