

Courtesy Of Mani Bagga and Matt Donahue Of Royal LePage Magna

\$649,900 - 5 27317 Twp Rd 522, Rural Parkland County

MLS® #E4419493

\$649,900

3 Bedroom, 1.50 Bathroom, 2,274 sqft

Rural on 3.60 Acres

South Parkdale, Rural Parkland County, AB

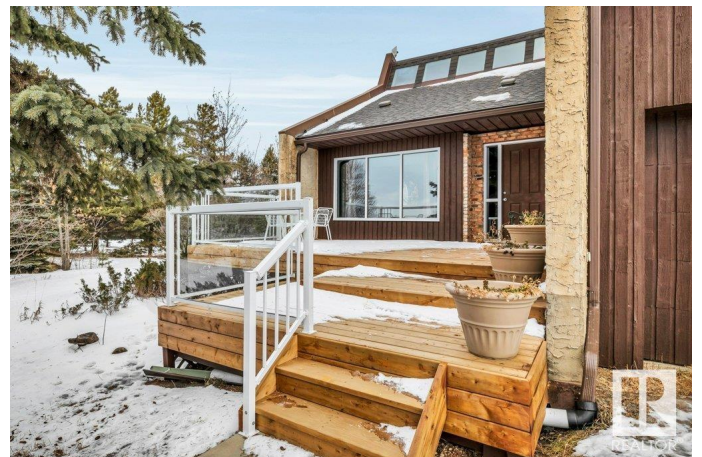
Nestled in a peaceful rural setting, this charming ONE of a KIND CUSTOM BUILT home offers the perfect blend of comfort & countryside tranquility! This property boasts a total of over 3,800 sqft of living space! The custom layout includes a large living room, a bonus room, a formal dining area & country-style kitchen w/ plenty of cabinet space & a breakfast nook! The home includes three well-sized bedrooms w/ a master suite w/ ample closet space & scenic views of the surrounding landscape! The large, sun-filled windows throughout the house provide beautiful views of the rolling countryside beyond! The home is built w/ 12" CONCRETE BLOCK WALLS & CONCRETE FLOORS w/ INFLOOR HEATING throughout the home! The exterior features a well-maintained garden area, mature trees for added privacy w/ a 943 sqft workshop (27ft x 35ft) w/ 12ft ceilings & extra storage shed! This rural retreat offers a serene escape from the hustle & bustle of city life, w/ easy access to nearby towns for shopping & amenities, AMAZING VALUE!

Built in 1982

Essential Information

MLS® # E4419493

Price \$649,900



Bedrooms	3
Bathrooms	1.50
Full Baths	1
Half Baths	1
Square Footage	2,274
Acres	3.60
Year Built	1982
Type	Rural
Sub-Type	Detached Single Family
Style	2 Storey
Status	Active

Community Information

Address	5 27317 Twp Rd 522
Area	Rural Parkland County
Subdivision	South Parkdale
City	Rural Parkland County
County	ALBERTA
Province	AB
Postal Code	T7X 2T5

Amenities

Features	Front Porch, Parking-Extra, Workshop
Parking Spaces	6

Interior

Interior Features	ensuite bathroom
Heating	Hot Water, In Floor Heat System, Natural Gas
Stories	3
Has Basement	Yes
Basement	Full, Partially Finished

Exterior

Exterior	Block
Exterior Features	Treed Lot
Construction	Block
Foundation	Concrete Perimeter

Additional Information

Date Listed January 28th, 2025

Days on Market 45

Zoning Zone 90

DATA IS DEEMED RELIABLE BUT IS NOT GUARANTEED ACCURATE BY THE REALTORS® ASSOCIATION OF EDMONTON. COPYRIGHT 2025 BY THE REALTORS® ASSOCIATION OF EDMONTON. ALL RIGHTS RESERVED. Trademarks are owned or controlled by the Canadian Real Estate Association (CREA) and identify real estate professionals who are members of CREA (REALTOR®, REALTORS®) and/or the quality of services they provide (MLS®, Multiple Listing Service®)

Listing information last updated on March 14th, 2025 at 12:17pm MDT