

\$789,900 - 78 Edgefield Way, St. Albert

MLS® #E4361459

\$789,900

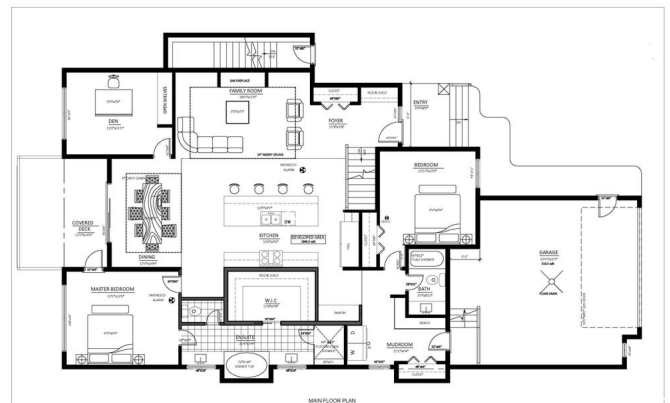
3 Bedroom, 2.00 Bathroom, 2,057 sqft

Single Family on 0.00 Acres

Erin Ridge North, St. Albert, AB

Enjoy Christmas in your new home... all wrapped up! With this home all you need to do is move in and unpack. Everything else will be done for you... COMPLETELY LANDSCAPED FRONT AND BACK WITH FENCE/GATE; stair from the huge balcony to the yard. Blinds installed. This 2,057 SF Bungalow Over 1650 SF developable for a Legal Suite. 10' Ceilings 12' in Livingroom, 9' Bsmt. Home offers 3 BD on Main. 1 full bath and 5pce Spa Ensuite. Kitchen cabinets to the ceiling. Quartz countertops. Primary luxury ensuite spa, jetted tub, double sinks plus a huge custom walk-in closet. Oversized double garage w floor drain. DuraDeck Balcony with access through 96" sliding doors from the dining room for indoor/outdoor living. Patio Door from Primary Bedroom. Magnificent for Entertaining or relaxing! Enjoy the Pond and Pathways. Major Shopping, Schools, Recreation Facilities, Major/Minor arterial Roads

Built in 2023



Essential Information

MLS® #	E4361459
Price	\$789,900
Bedrooms	3
Bathrooms	2.00

Full Baths	2
Square Footage	2,057
Acres	0.00
Year Built	2023
Type	Single Family
Sub-Type	Detached Single Family
Style	Bungalow
Status	Active

Community Information

Address	78 Edgefield Way
Area	St. Albert
Subdivision	Erin Ridge North
City	St. Albert
County	ALBERTA
Province	AB
Postal Code	T8N 7Z9

Amenities

Amenities	Ceiling 10 ft., Ceiling 9 ft., Deck, Exterior Walls- 2"x6", Wall Unit-Built-In
Parking	Double Garage Attached, Over Sized, See Remarks

Interior

Interior Features	ensuite bathroom
Appliances	Dishwasher - Energy Star, Dryer, Garage Control, Garage Opener, Hood Fan, Oven-Built-In, Refrigerator-Energy Star, Stove-Countertop Electric, Washer - Energy Star
Heating	Forced Air-1, Natural Gas
Fireplace	Yes
Fireplaces	Wall Mount
Stories	1
Has Basement	Yes
Basement	See Remarks

Exterior

Exterior	Wood, Stone, Vinyl
Exterior Features	Golf Nearby, Shopping Nearby, See Remarks
Roof	Asphalt Shingles
Construction	Wood, Stone, Vinyl

Foundation Concrete Perimeter

Additional Information

Date Listed October 8th, 2023

Days on Market 588

Zoning Zone 24

DATA IS DEEMED RELIABLE BUT IS NOT GUARANTEED ACCURATE BY THE REALTORS® ASSOCIATION OF EDMONTON. COPYRIGHT 2025 BY THE REALTORS® ASSOCIATION OF EDMONTON. ALL RIGHTS RESERVED.Trademarks are owned or controlled by the Canadian Real Estate Association (CREA) and identify real estate professionals who are members of CREA (REALTOR®, REALTORS®) and/or the quality of services they provide (MLS®, Multiple Listing Service®)

Listing information last updated on May 18th, 2025 at 4:32pm MDT